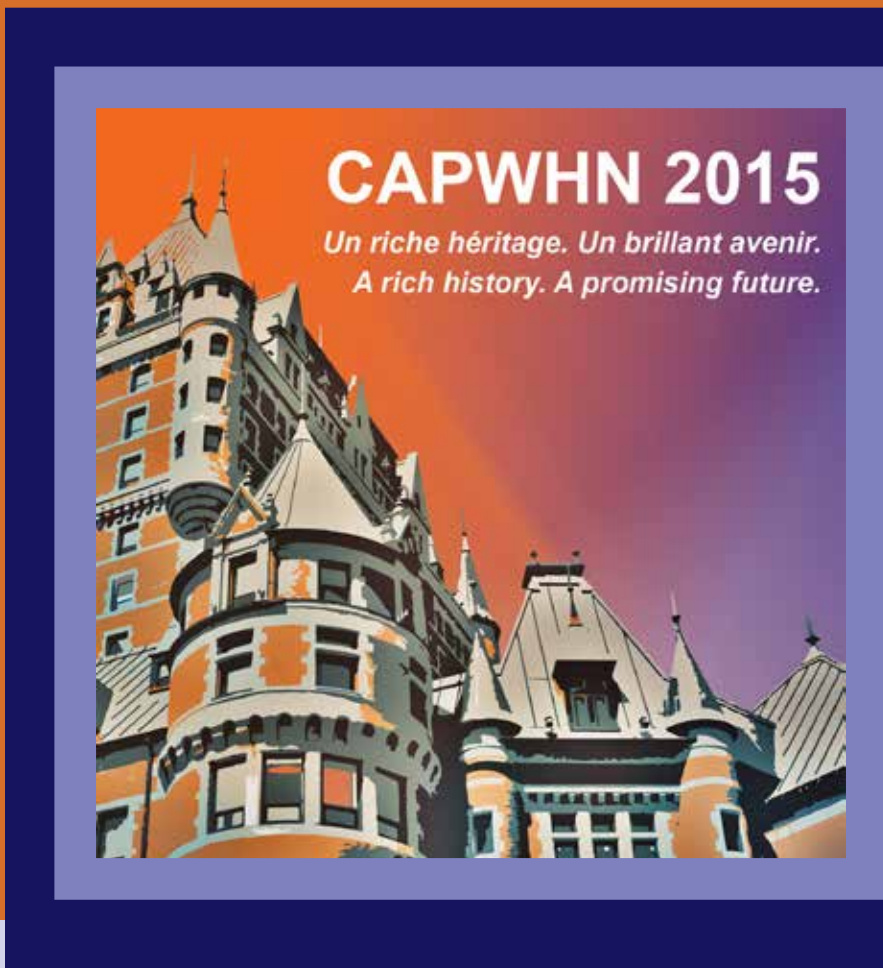




5^e Conférence nationale | 5th National Conference

*Un riche héritage. Un brillant avenir.
A rich history. A promising future.*



**Du 5 au 7 novembre 2015
Hilton Québec
Québec, QC**

**November 5-7, 2015
Hilton Quebec
Quebec City, QC**



Canadian Association of Perinatal and
Women's Health Nurses

Association canadienne des infirmières et infirmiers
en périnatalité et en santé des femmes



MERCI À NOS COMMANDITAIRES / THANK YOU TO OUR SPONSORS

L'Association canadienne des infirmières et infirmiers en périnatalité et en santé des femmes (CAPWHN) remercie très chaleureusement les commanditaires suivants, qui nous ont offert des subventions éducationnelles sans restriction pour la 5^e Conférence nationale de CAPWHN. / The Canadian Association of Perinatal and Women's Health Nurses gratefully acknowledges the following sponsors for generously providing unrestricted educational grants in support of the CAPWHN 5th National Conference.

PLATINE / PLATINUM

The logo for Dräger, featuring the word "Dräger" in a bold, blue, sans-serif font.The logo for Johnson & Johnson, featuring the company name in a red, cursive script font, with "INC" in a smaller, blue, sans-serif font below it.

ARGENT / SILVER



GE Healthcare

BRONZE

MAQUET-DYNAMED PHILIPS

PARTENAIRES / PARTNERS

The logo for Canada, featuring the word "Canada" in a black, serif font, with a small Canadian flag to the right of the letter "a".



Bienvenue à Québec !

Au nom des membres du Comité organisateur de la 5^e Conférence nationale de CAPWHN 2015, nous vous souhaitons la plus cordiale des bienvenues dans la vieille capitale! Sous le thème « Un riche héritage. Un brillant avenir. », nous vous proposons un programme riche et diversifié qui saura assurément susciter votre intérêt.

Des quatre coins du Canada, des conférenciers renommés, issus des milieux cliniques et académiques, viennent vous partager les retombées de leurs innovations cliniques, les fruits de leurs recherches et les dernières avancées en termes de formation. Les sessions spécialisées et thématiques mises à l’horaire visent à vous offrir des outils pour enrichir votre pratique infirmière. Les nombreuses sessions simultanées et présentations par affiche sauront elles aussi vous donner des pistes de réflexion sur les soins infirmiers en périnatalité et en santé des femmes.

Comme par le passé, CAPWHN vous offre une occasion en or d’élargir votre réseau et d’échanger avec vos collègues de partout au Canada, ce qui constitue l’un des grands avantages de participer à ce rassemblement annuel. Pour rythmer vos échanges, nous avons prévu une réception de bienvenue le jeudi 5 novembre, où vous aurez l’occasion de rencontrer nos exposants. Afin de souligner le cinquième anniversaire de CAPWHN, nous vous proposons, pour le vendredi soir, une soirée endiablée toute en musique avec la famille Painchaud, sous le thème « Marguerites et saphirs ». Pour cette soirée, vous êtes invitées à vous vêtir de bleu ou de blanc.

Pendant votre séjour, vous pourrez vous divertir et découvrir les attraits touristiques de la région de Québec. Vous avez envie de prendre l’air? Joignez-vous à nous pour une Trotte des Toonies historique qui vous fera découvrir l’histoire de Québec et ses monuments, une course de 5km ou encore une séance de Zumba. Les profits de cette levée de fonds seront versés à l’œuvre de charité locale « Les Perséides », un organisme de bienfaisance qui vise à soutenir les familles endeuillées à la suite d’un décès périnatal.

Nous avons maintenant le plaisir de vous accueillir à Québec et de célébrer avec vous le cinquième anniversaire de CAPWHN. Venez festoyer avec nous, venez explorer cette région touristique des plus attrayantes, mais surtout venez stimuler votre pensée infirmière et vous enrichir de nouvelles connaissances avec vos collègues en périnatalité et santé des femmes!



Diane Bourget

Welcome to Quebec City!

On behalf of CAPWHN’s 5th National Conference Planning Committee members, we cordially welcome you to the Old capital! Under the theme: “A rich history. A promising future.” we have orchestrated a rich and diversified program which is certain to pique your interest.

From everywhere in Canada, renowned speakers arising from clinical and academic settings are converging to share the results of their clinical innovations, the fruits of their research and the latest trends in education. The scheduled specialty and thematic sessions aim to offer tools to enhance nursing practice. The numerous simultaneous sessions and poster presentations on perinatal and women’s health nursing are guaranteed to be thought provoking.

CAPWHN once again presents an unparalleled opportunity to widen your network and chat with colleagues from all across Canada, one of the many advantages of participating in this yearly event. To help you mingle with your colleagues we have planned a welcome reception on Thursday November 5th, when you will have the opportunity to meet with our exhibitors. In order to celebrate CAPWHN’s 5th anniversary, Friday evening’s social event will feature with the bewitching music of the Painchaud family, under the theme “Sapphires and Daisies.” We suggest you wear either blue or white for the occasion!

While you enjoy your stay, take the time to discover the various attractions of the Quebec region. Need some fresh air? Join us for a historical Toonie Trot which will help you discover Quebec City’s history and monuments, a 5k run or a Zumba session. All proceeds of this fundraiser will be donated to our local charity “Les Perséides” an organization that supports bereaved families following a perinatal loss.

It is our great pleasure to welcome you to Quebec City and to celebrate CAPWHN’s fifth anniversary. Come and share in the jubilation, come and explore this extraordinary travel destination, but most importantly come and stimulate your nursing mindset and immerse yourself in new knowledge with your colleagues in perinatal and women’s health nursing!



Marjolaine Héon

Welcome to CAPWHN's 5th National Conference!

On behalf of the CAPWHN Board of Directors it is my pleasure to welcome you to Quebec City for the 5th CAPWHN National Conference and Annual General Meeting. Quebec City offers terrific restaurants, shopping and incredible glimpses of history. When that is coupled with stimulating keynote speakers, ground breaking research, and clinical innovations, we cannot help but have a terrific experience.

The Board would like to extend a sincere thank you to the conference planning committee and particularly Diane Bourget and Marjolaine Héon – who are our co chairs - a challenging job they did so well. Much thanks are also due to subcommittee chairs – Irene Sarasua (program), Linda Bell & Francine de Montigny (scientific), and Sabrina Haas & Angèle Robillard (marketing). Their hard work and energy have made this conference what it is. In addition to all the clinical, education and research material, I know you will enjoy the Daisies and Sapphires dinner and you will have great fun with the Painchaud family – they will make you laugh and amaze you at the same time.

While you are here please take a moment to speak to members of the Executive Committee and take time to join the meeting with your Regional Director. It is important to all of us that CAPWHN reflects the type of organization that is meaningful to Perinatal and Women's Health nurses. Consider joining a committee or interest group to help us build CAPWHN even bigger and better. CAPWHN members have many different roles in a variety of organizations and have implemented or are working on a number of initiatives with women and families in Canada. Please share your ideas with us so that we can reflect your work from coast to coast to coast across our great country.

Cheers,

Sharon Dore RN, PhD
CAPWHN President



Sharon Dore

Bienvenue à la 5^e Conférence nationale de CAPWHN!

À titre de présidente de CAPWHN, je me joins à mes collègues du Conseil d'administration pour vous souhaiter la plus chaleureuse bienvenue à Québec pour la cinquième Conférence nationale et notre AGA.

Québec, c'est un paradis de restaurants, de boutiques et de bijoux historiques, attrait qui complètent les conférences principales dynamiques, la recherche pointue et les innovations cliniques au programme... une formule gage d'une expérience des plus amusantes et stimulantes.

Le Conseil remercie sincèrement le comité organisateur de ce magnifique rassemblement et, en particulier, Diane Bourget et Marjolaine Héon, qui ont assuré avec brio la co-présidence. Il faut aussi rendre hommage aux présidentes de comités : Irene Sarasua (programme), Linda Bell et Francine de Montigny (scientifique) ainsi que Sabrina Haas et Angèle Robillard (marketing). C'est grâce au travail et à l'énergie de toutes ses bénévoles que notre conférence regorge d'effervescence.

En plus du contenu clinique, scientifique et éducatif qui vous attend, vous vous régalez au banquet « Marguerites et saphirs » et vivrez une vraie partie de plaisir à savourer l'humour tonifiant et les prouesses renversantes de la famille Painchaud.

Pendant votre séjour, je vous invite à vous entretenir avec les membres du Comité exécutif et à participer à la réunion animée par votre directrice régionale. CAPWHN doit affirmer toute sa pertinence pour la communauté infirmière en périnatalité et en santé des femmes. Songez donc à faire partie d'un comité ou d'un groupe d'intérêt pour nous aider ainsi à en favoriser l'essor continu. En effet, ce sont vos idées qui lui permettront de réaliser son plein potentiel.

Cordialement,

Sharon Dore I.A., Ph.D.
Présidente de CAPWHN



Objectifs de la cinquième Conférence nationale : Un riche héritage. Un brillant avenir.

- Discuter des défis liés à l'évolution du profil de la clientèle en périnatalité, néonatalogie et santé de la femme
- Identifier des stratégies visant à soutenir les forces et le plein potentiel des familles
- Se brancher sur les nouvelles technologies et les pratiques infirmières novatrices en périnatalité, en néonatalogie et en santé des femmes
- Promouvoir le développement de la pratique infirmière dans un milieu en perpétuel changement
- Consolider la pratique, l'éducation, et la recherche par le rayonnement et le partage des savoirs infirmiers

La Faculté des sciences infirmières de l'Université de Montréal reconnaît, à la présente activité, 14,25 heures de formation accréditées. Notez que la Faculté des sciences infirmières accrédite la formation en titre pour les journées du 5, 6 et 7 novembre 2015 exclusivement. Si vous souhaitez obtenir une lettre d'attestation d'heures de formation accréditées de la Faculté des sciences infirmières de l'Université de Montréal, vous devez vous enregistrer et payer 7\$ (par chèque ou monnaie exacte seulement) durant la conférence.

La conférence CAPWHN est reconnue comme activité d'apprentissage continu (AC) par l'AIIC pour le renouvellement de votre certification en périnatalité ou dans une spécialité connexe. Veuillez conserver votre attestation de présence à cette fin.

CAPWHN a reçu l'approbation pour 15,43 L et 5,32 R Continuing Education Recognition Points (CERPs) auprès du *International Board of Lactation Consultant Examiners (IBLCE)*; le numéro d'approbation est le C1551292. Nous vous donnerons un certificat de participation détaillant les CERPs alloués par IBLCE à cette fin après la conférence.

Œuvre de charité de la Conférence

Chaque année, lors de la conférence nationale, CAPWHN tient des activités de levée de fonds, dont la Trotte des Toonies et l'encan silencieux, pour un organisme de charité local en lien avec la santé des femmes et leurs familles. Cette année, les membres du Comité organisateur de la 5^e Conférence nationale de CAPWHN ont choisi l'organisme à but non-lucratif « *Les Perséïdes* ». Actif dans la grande région de Québec depuis 2003, « *Les Perséïdes* » a comme but d'accompagner les personnes touchées par le deuil périnatal et de sensibiliser la communauté à cette réalité. Cet organisme offre des groupes d'entraide pour les parents ayant perdu un enfant soit à la naissance, par fausse couche, interruption de grossesse, grossesse ectopique ou encore pendant sa première année de vie. Il offre également un service de soutien individuel ou de groupe aux parents souhaitant à nouveau la venue d'un enfant ou vivant la réalité de porter la vie à la suite à d'un décès périnatal.

Goals of the 5th National Conference: A rich history. A promising future.

- Discuss the challenges associated with the changing needs of the perinatal, neonatal and women's health populations
- Identify strategies that promote the strengths of families and support them in achieving their full potential
- Showcase the newest technologies and innovative practices in perinatal, neonatal and women's health
- Promote the development of Nursing practice in an ever changing environment
- Strengthen nursing practice, education and research through knowledge translation

The Université de Montréal Faculty of Nursing will recognize 14.25 hours of accredited continuing education for the conference, limited to sessions held on November 5th, 6th, and 7th. Those requiring an official certificate of attendance from l'Université de Montréal must register and pay \$7 (cheque or exact cash only) during the conference.

Your continuing education hours at the CAPWHN conference qualify for CNA certification renewal towards perinatal or another relevant specialty. Please keep a copy of your certificate of attendance for this purpose.

CAPWHN has received approval for 15.43 L and 5.32 R Continuing Education Recognition Points (CERPs) from the International Board of Lactation Consultant Examiners (IBLCE); IBLCE approval number C1551292. A certificate of attendance detailing the CERPs allocated by IBLCE will be available following the conference.

Conference Charity

Every year, during the national conference, CAPWHN holds fundraising activities, including the Toonie Trot and a silent auction, for a local charity related to the health of women and their families. This year, the members of the Planning Committee of CAPWHN's 5th National Conference have chosen non-profit organization "*Les Perséïdes*." Active in the greater Quebec City area since 2003, "*Les Perséïdes*" aims to support parents affected by perinatal bereavement and raise community awareness with regard to this reality. This organization offers support groups for parents who have lost a child at birth or through miscarriage, abortion, ectopic pregnancy or during the first year of life. It also offers individual or group support for parents wishing the arrival of a new child or living the reality of life bearing following perinatal death.

Membres du Comité organisateur de la 5^e Conférence nationale de CAPWHN / CAPWHN 5th National Conference Planning Committee

Co-présidentes et Comité d'accueil / Co-chairs and Hospitality Committee

Diane Bourget
Marjolaine Héon

Comité de programmation / Program Committee

Irene Sarasua (*Présidente / Chair*)

Kimani Daniel
Amélie Guay
Jennifer Somera
Anne-Marie Lanctot
Woodeline Dorlean
Jennifer Marandola

Comité scientifique / Scientific Committee

Linda Bell (*Co-présidente / Co-chair*)
Francine de Montigny (*Co-présidente / Co-chair*)
Christine Gervais
Marilyn Aita
Sonia Semenic
Marie-Josée Bourassa

Comité de publicité et marketing / Marketing Committee

Sabrina Haas (*Co-présidente / Co-chair*)
Angèle Robillard (*Co-présidente / Co-chair*)
Ginette Aucoin
Francine Brissette

Conseil d'administration de CAPWHN / CAPWHN Board of Directors

Sharon Dore, *Présidente / President*
Lisa Keenan-Lindsay, *Présidente sortante / Past President*
Kathryn Banks, *Trésorière / Treasurer*
Pam O'Sullivan, *Directrice (région de la Colombie-Britannique, de l'Alberta et du Yukon) / Regional Director (British Columbia, Alberta and Yukon)*
Pat Gregory, *Directrice (région de Saskatchewan, du Manitoba et des Territoires du Nord-Ouest) / Regional Director (Saskatchewan/Manitoba/ Northwest Territories)*
Monica Friesen, *Directrice (région de l'Ontario) / Regional Director (Ontario)*
Diane Bourget, *Directrice (région du Québec) / Regional Director (Quebec)*
Lisa Bland, *Directrice (région de l'Atlantique et de Nunavut) / Regional Director (Atlantic Provinces and Nunavut)*
Marilyn Evans, *Conseillère / Director at large*
Cyndee MacPhee, *Conseillère / Director at large*

Collaboration de CAPWHN / CAPWHN Support

Rita Assabgui, *Directrice générale/Executive Director*





Généralités

Voici quelques renseignements pour vous aider à profiter davantage de la Conférence.

Bureau d'inscription...et plus!

Oui, ici, en plus de vous inscrire, vous pouvez faire une demande d'adhésion à CAPWHN, obtenir de l'information sur Québec, voir les articles de l'encan silencieux et faire des paiements. Le Bureau d'inscription se trouve au foyer du premier étage du Hilton Québec et est ouvert à ces heures :

- Jeudi 5 novembre 7 h – 17 h 30
- Vendredi 6 novembre 7 h – 17 h
- Samedi 7 novembre 7 h 30 – 13 h

Insignes d'identité

Vous devez porter votre insigne en tout temps pendant la conférence. Cela favorise le réseautage et sert de preuve de votre inscription en bonne et due forme. Les séances auxquelles vous participez figurent sur le carton avec votre insigne.

Petits-déjeuners, pauses et repas du midi

Les petits-déjeuners continentaux, les pauses et les repas du midi vous sont offerts pendant les trois jours de la conférence. Si vous avez opté pour l'inscription quotidienne, vous avez droit aux repas de la journée en question. Les repas sont servis dans la salle d'exposition (Kent / Saint-Louis).

Exposants

Nous vous encourageons à visiter nos exposants dans la salle (Kent / Saint-Louis). Leur soutien contribue au succès de la Conférence nationale CAPWHN. Les kiosques sont ouverts pendant tous les repas et toutes les pauses jusqu'au vendredi 6 novembre à 13 h.

Passeport

Votre Passeport des exposants est dans votre trousse d'inscription. Vous devez visiter tous les kiosques pour obtenir les réponses aux questions. Une fois votre passeport rempli, déposez-le au Bureau d'inscription au plus tard vendredi après-midi pour avoir une chance de gagner une adhésion d'un an à CAPWHN.

Réception d'ouverture avec les exposants

Jeudi soir – C'est le moment tout indiqué pour remplir votre Passeport car vous aurez l'occasion de rencontrer tous les exposants. Si vous avez choisi de participer à cette réception, votre billet d'entrée et votre coupon pour une consommation sont au verso de votre insigne d'identité. On vous servira de succulents amuse gueule, et un bar payant vous proposera de bons cocktails.

Soirée souper-spectacle « Marguerites et saphirs »

Vendredi soir – Si vous avez choisi de participer à cette soirée, votre billet pour le souper est au verso de votre insigne d'identité. Encore une fois, un bar payant vous proposera de quoi vous désaltérer. Cet événement ne demande pas une tenue de cérémonie, mais nous espérons vous accueillir en tenue de cocktail bleue ou blanche recommandée pour notre thème des marguerites et des saphirs. Venez apprécier la musique du célèbre groupe de Québec, la famille Painchaud! La marguerite et le saphir sont respectivement la fleur et la pierre choisies pour un cinquième anniversaire – célébrons avec style!

General Information

The following information is provided to help make your experience at the conference more enjoyable.

Registration Desk

This is your one-stop shop for registration, membership applications, general Quebec City information and maps, as well as silent auction and boutique payments. The registration desk is located in the 1st floor foyer of the Hilton Quebec and will be staffed during the following hours:

- Thursday November 5th 07:00 - 17:30
- Friday November 6th 07:00 - 17:00
- Saturday November 7th 07:30 - 13:00

Name Badges

Name badges must be worn at all times while at the conference. These are very helpful when networking with other delegates and clearly identify you as a conference delegate. The sessions for which you registered are included with your name badge.

Meals

Continental breakfasts, breaks and lunches throughout the three day conference are included in the full conference registration fees. If you registered at the daily rate, meals will only be included for the day for which you registered. Meals are located in the Exhibit Hall (Kent / Saint-Louis).

Exhibitors

All conference delegates are encouraged to visit the exhibitors in the Exhibit Hall (Kent / Saint-Louis). Our exhibitors' support contributes greatly to the success of the CAPWHN National Conference. Exhibits are open during all meals and breaks until Friday November 6th at 13:00.

Passport

Your exhibitor passport is in your delegate bag. You must visit all of the exhibitors to receive the answers to the questions. Deposit your completed passport at the registration desk by Friday afternoon for a chance to win a CAPWHN membership for a year.

Opening Reception with Exhibitors

You will have an opportunity to meet with the exhibitors during Thursday evening's opening reception. Be sure to take time to fill out your passport and learn about the latest products and advances in perinatal and women's health. If you registered for the reception, you will find your reception ticket and one drink ticket at the back of your badge. Yummy appetizers will be served and a cash bar is available.

Daisies and Sapphires

This is the theme for Friday evening's dinner show. If you registered for the event you will find your dinner ticket at the back of your badge. A cash bar is available. The event is not a formal affair, but we hope to see you in blue or white cocktail attire in accordance with our theme as we enjoy the music of Quebec City's renowned Painchaud Family! The daisy and the sapphire are the 5th anniversary flower and gemstone respectively - so let's celebrate in style!



Généralités - suite

Affiches

Rendez-vous au foyer du deuxième étage pour y voir la magnifique série d'affiches scientifiques et prendre connaissance des percées générées par les projets et les initiatives de vos collègues partout au pays - qui seront d'ailleurs auprès de leurs affiches le jeudi 5 novembre 2015 de 17 h à 17 h 30 pour répondre à vos questions. .

Œuvres de bienfaisance

C'est avec plaisir que nous amassons des fonds pour « *Les Perséides* », un organisme de bienfaisance qui vise à soutenir les familles endeuillées à la suite d'un décès périnatal, au moyen de l'activité Toonie Trot : faites don d'une pièce de 2\$ dans la boîte prévue à cet effet avant de prendre part à 5 km de course dans un décor pittoresque, à une marche historique de 1 km ponctuée d'attrait touristiques ou à une séance de Zumba pour celles qui préfèrent une activité intérieure. Venez faire monter les enchères lors de notre encan silencieux – venez voir les items mis en vente au foyer! Vous pouvez aussi faire un don directement à l'organisme « *Les Perséides* ». Nous comptons sur votre générosité, car toutes les recettes sont versées à « *Les Perséides* ».

Boutique CAPWHN

Procurez-vous des articles CAPWHN à des prix imbattables. Faites vite car les tablettes se vident vite!

Prix de présence

Les tirages ont lieu tout au long de la conférence. Votre présence est exigée au moment du tirage pour que vous puissiez réclamer votre prix.

Messages

Un babillard se trouve au bureau d'inscription, au foyer du premier étage. Veuillez le vérifier régulièrement pour y faire des retrouvailles ou de nouveaux contacts.

Une solution verte

Nous vous remettons sur une clé USB le texte des exposés soumis avant notre conférence. Il vous suffit d'aller au centre d'affaires de l'hôtel pour faire imprimer un exposé quelconque.

Sans parfum

CAPWHN reconnaît l'importance d'un milieu non odorant : Veuillez vous abstenir de porter des produits parfumés.

General Information - Cont'd

Posters

A fabulous array of research and clinical posters are being presented at the conference. Make time to visit the poster presentations on the 1st floor foyer to learn new information and findings from projects and initiatives from colleagues across the country. Poster presenters will attend their posters on Thursday November 5, 2015 from 17:00-17:30 to answer any questions you may have.

Conference Charity

We are pleased to support *Les Perséides*, a Quebec City organization providing support for families suffering a perinatal loss. We are raising funds through the following activities: the Toonie Trot - drop a Toonie in the donation box before heading out on a picturesque 5 km run; a 1 km Historical Walk - featuring historical stops along the way; a Zumba class for those who prefer an active indoor option; and the Silent Auction - check out the great items in the foyer! We also accept general donations. Please give generously! All proceeds from these events (cheque or exact cash only please) are donated to the *Les Perséides*.

CAPWHN Boutique

Find great CAPWHN items at terrific prices. Get yours before they sell out!

Door Prizes

Draws for prizes occur throughout the conference. Winners must be present at the time of the draw to claim their prize.

Messages

For your convenience, a message board is located in the 1st floor foyer. Please use it to connect with new and old friends and don't forget to check it regularly!

Green Initiative

Delegates will receive a USB with their delegate kit. The USBs will be loaded with the presentations received in advance of the conference where authors have authorized that they be shared. There is a business centre at the hotel should you wish to print a particular presentation.

Scent Free Environment

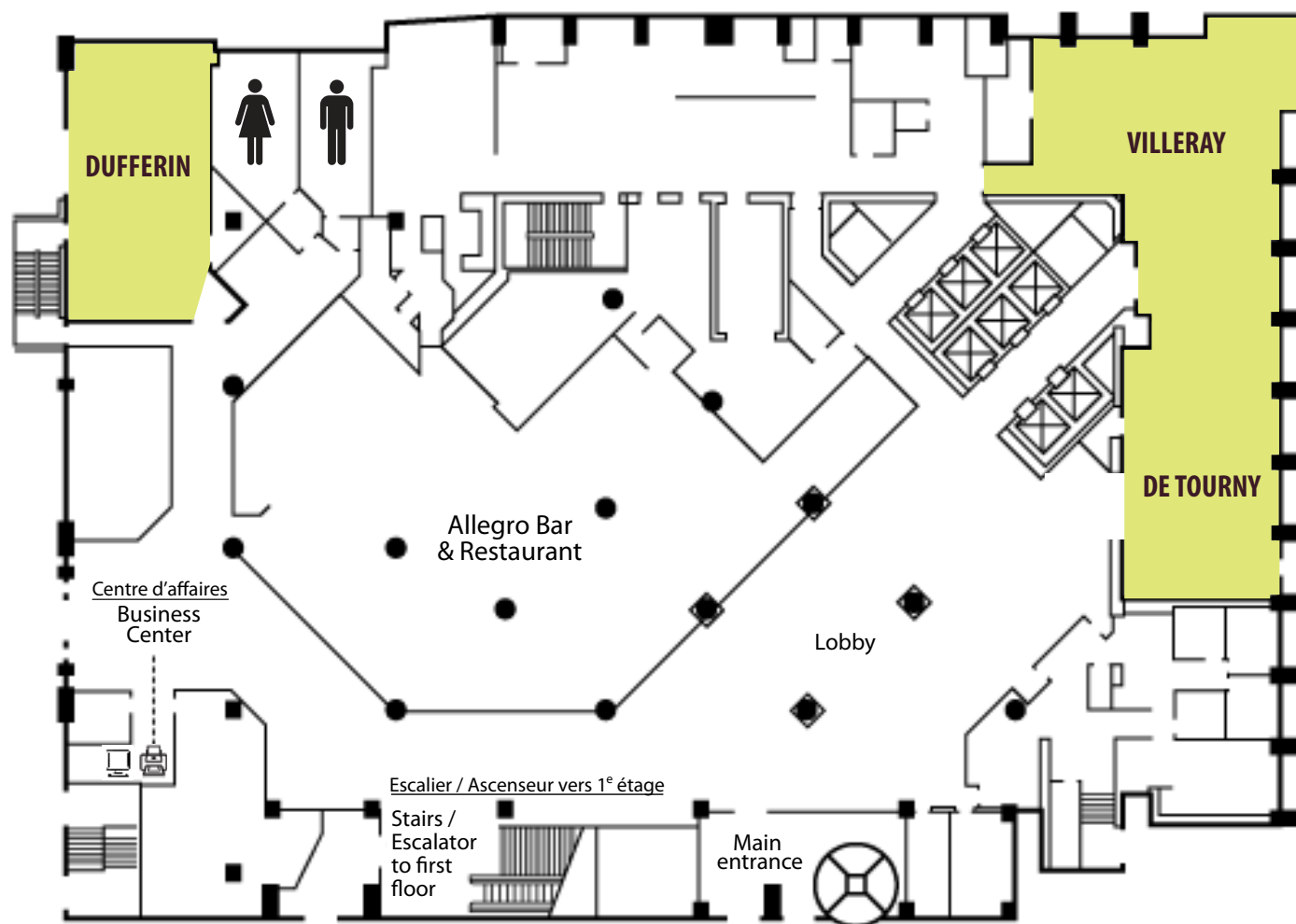
CAPWHN is committed to providing a scent free environment. Please refrain from wearing any scented products during the conference.





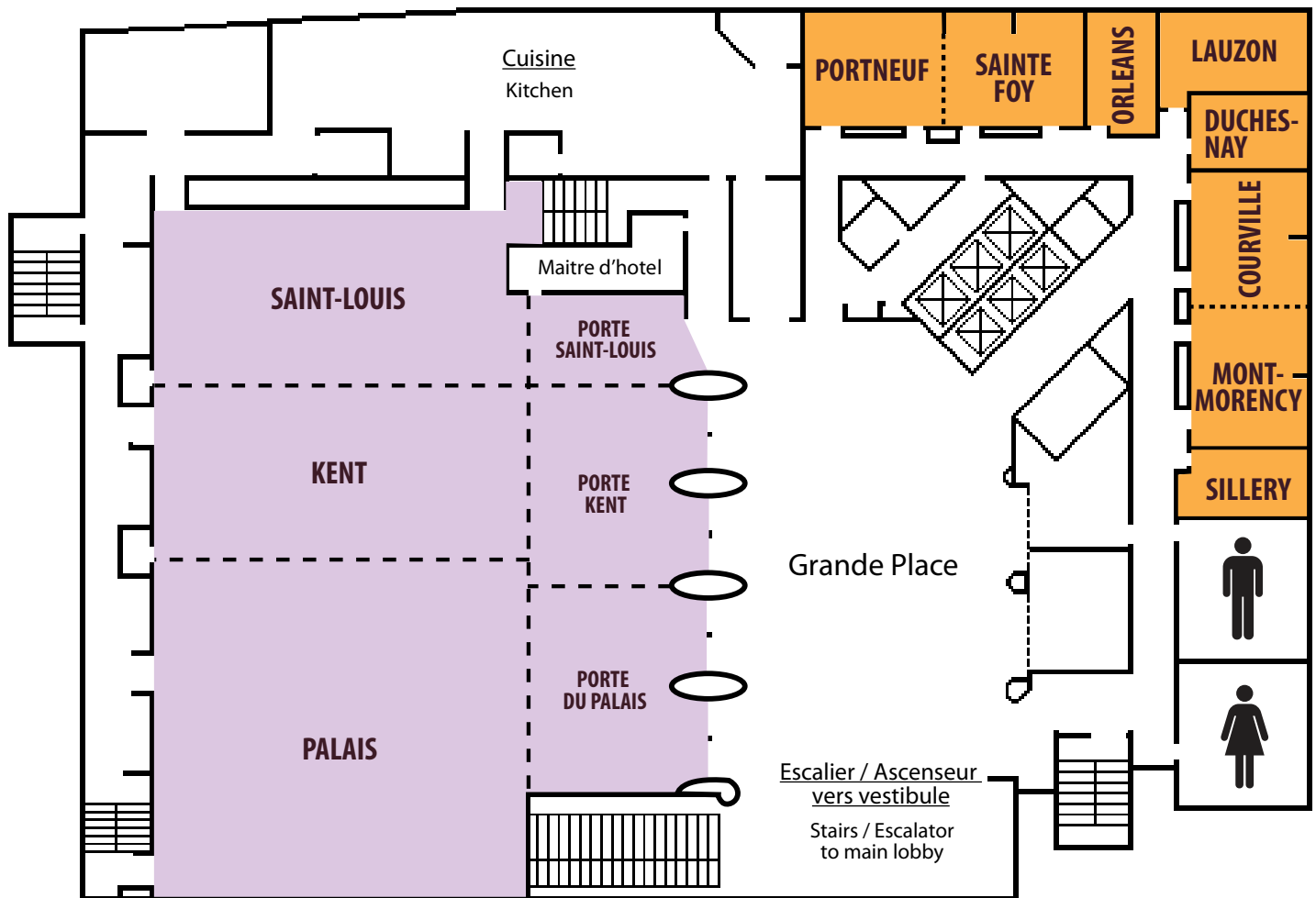
Plan de l'étage / Floor Plan

Rez-de-chaussée • Main Floor



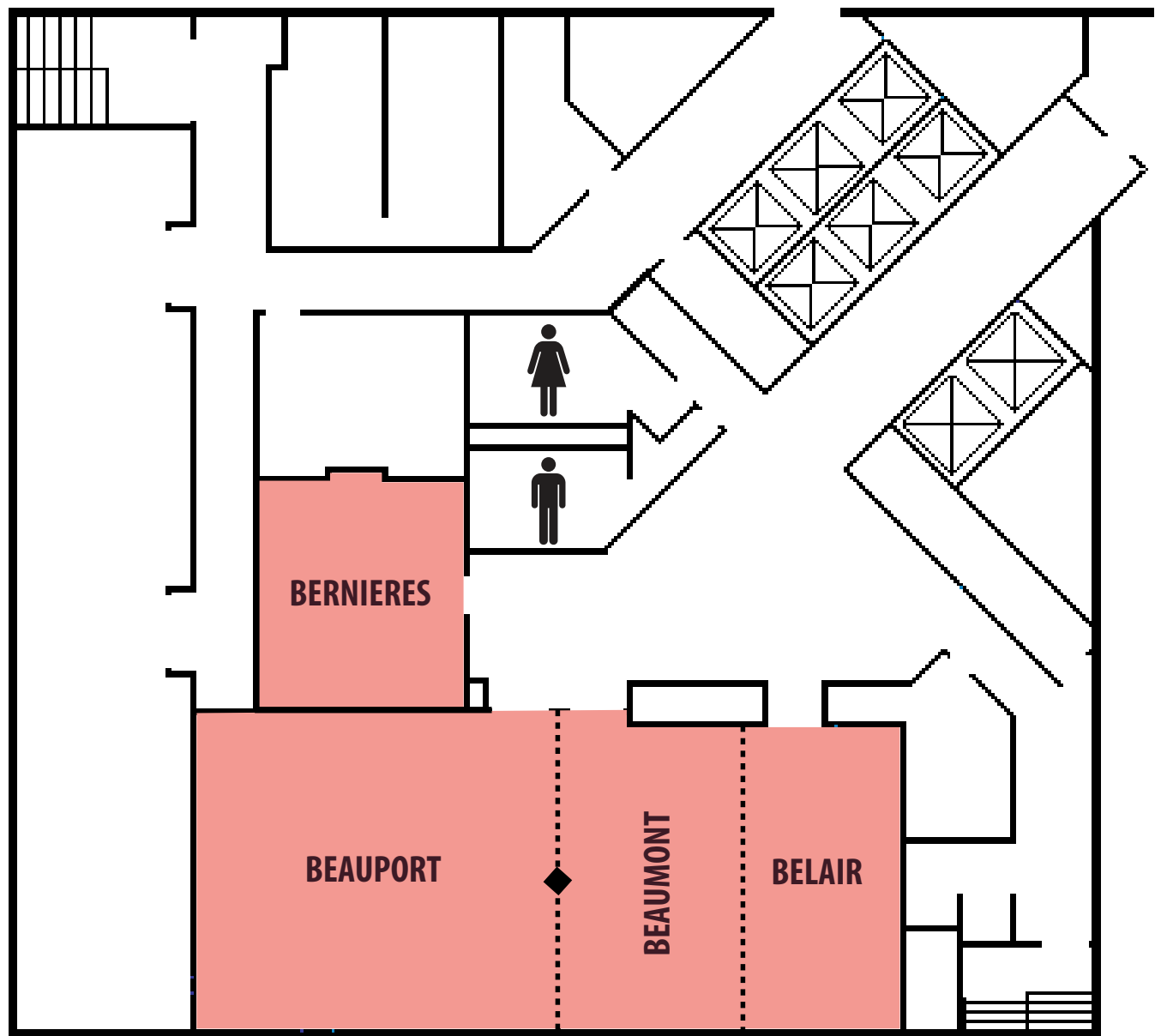


1^{er} étage • 1st floor





2^e étage • 2nd floor



Survol du programme / Program at a Glance

Pré-conférence - Mercredi le 4 novembre / Pre-conference - Wednesday, November 4th

13:00-17:00	Atelier / Workshop <i>SAINTE-FOY</i> <i>Présentation en anglais / Presentation in English</i> Presenters: Kathryn Wodrich, RN, Coordinator, Birthing Unit, London Health Sciences Centre, London ON; Dr. R. Gratton, MFM, Chief of Obstetrics at London Health sciences Centre, London ON; and Nancy Watts, RN, MN, PNC(C), Clinical Nurse Specialist, Women's and Infant's Program, Mount Sinai Hospital, Toronto ON
-------------	---

Jour 1 - Jeudi le 5 novembre / Day 1 - Thursday, November 5th

07:00-08:00	Déjeuner avec les exposants / Breakfast with exhibitors <i>KENT/SAINT-LOUIS</i>
08:00-08:30	Mot de bienvenue et allocutions d'ouverture / Greetings and Opening Remarks <i>PALAIS</i>
08:30-09:30	Conférence principale / Keynote Presentation <i>PALAIS</i> Présentation en français avec traduction simultanée / Presentation in French with simultaneous interpretation into English Les effets de l'engagement paternel sur l'ensemble de la famille « Promouvoir l'engagement paternel : pourquoi, pour qui, comment ? » Conférencière : Francine de Montigny inf., Ph.D., professeure titulaire, Département des sciences infirmières, Université du Québec en Outaouais, Gatineau QC The effects of paternal involvement on the family “Promoting paternal involvement: why, for whom, and how?” Presenter: Francine de Montigny RN, PhD, Professor, Department of Nursing, Université du Québec en Outaouais, Gatineau QC
09:30-10:00	Pause avec exposants / Break with exhibitors <i>KENT/SAINT-LOUIS</i>
10:00-11:30	Sessions simultanées A / Concurrent Sessions A Session A01 - Paternité (présentation en français / presentation in French) <i>SAINTE-FOY</i> Session A02 - Relation parent-enfant (présentation en français / presentation in French) <i>PORTNEUF</i> Session A03 - Newborn Health <i>COURVILLE</i> Session A04 - Breastfeeding <i>MONTMORENCY</i> Session A05 - Supporting Vulnerable Families <i>BEAUPORT</i> Session A06 - Professional Practices <i>BEAUMONT/BELAIR</i> Session A07 - New Trends: Labour <i>DUFFERIN</i>
11:30-12:45	Dîner, exposants, présentations par affiche / Lunch, exhibitors, poster presentations <i>KENT/SAINT-LOUIS</i>





12:45-15:45	<p>Sessions spécialisées / Specialty Sessions (pause 14:15-14:30) / (break 14:15-14:30)</p> <p>Session SS01 - Physiothérapie périnéale <i>SAINTE-FOY</i> Présentation en français / Presentation in French « Périnée, zone taboue - Comment le protéger en pré-, post-partum et son importance chez la femme » Conférencière : Josée Chabot B.Sc., Kinatex Sports, Phisio L'Ornière, Québec QC</p> <p>Session SS02 - Adapter ses pratiques aux réalités des couples de même sexe <i>PORTNEUF</i> Présentation en français / Presentation in French « Regards sur les familles homoparentales » Conférencières : Jeanne Lagabriele et Marie-Josée Palardy, Coalition des familles homoparentales (CFH), Québec QC</p> <p>Session SS03 - Childbirth <i>BEAUMONT/BELAIR</i> “Trusting birth and working with the sensations of birth: The Bonapace Method” Presenters: Julie Bonapace MEd, and Malika Morisset Bonapace D.Psy, Gatineau QC</p> <p>Session SS04 - Late Preterm <i>DUFFERIN</i> “The challenges of caring for late preterm and early term infants” Presenter: Debbie Fraser MN, RNC-NIC, Athabasca University, Winnipeg MB</p> <p>Session SS05 - Skin-to-Skin <i>COURVILLE</i> “Why skin-to-skin for mother and baby at birth?” Presenter: Louise Dumas RN, MSN, PhD, Gatineau QC</p> <p>Session SS06 - Research and Knowledge Transfer <i>BEAUPORT</i> “Moving from Knowledge to Action: Successful strategies for implementing and sustaining best-practices in perinatal and women’s health nursing” Presenters: Sonia Semenic RN, PhD, McGill University Health Centre, Montreal QC and Angela Bowen RN, PhD, University of Saskatchewan, Regina SK</p> <p>Session SS07 - Grossesse à risque élevé (GARE) <i>MONTMORENCY</i> Présentation en français / Presentation in French « Suivi des grossesses à risque à domicile une réalité à découvrir » Conférencière : Dominique Vincent inf., BSc.N., Centre Hospitalier Universitaire Sainte-Justine, Montréal QC</p>
15:45-17:00	<p>Conférence principale / Keynote Presentation <i>PALAIS</i> Présentation en anglais avec traduction simultanée / Presentation in English with simultaneous interpretation into French « Le Moi inc. » Conférencier : Sylvain Boudreau, Québec QC</p> <p>“The Me Inc.” Presenter: Sylvain Boudreau, Quebec City QC</p>
17:00-17:30	Présentations par affiche / Poster presentations <i>GRANDE PLACE</i>
17:30-19:30	Réception avec exposants / Reception with exhibitors <i>KENT/SAINT-LOUIS</i>

Survol du programme / Program at a Glance

<i>Jour 2 – Vendredi le 6 novembre / Day 2 – Friday, November 6th</i>	
07:00-08:30	Déjeuner avec les exposants / Breakfast with exhibitors <i>KENT/SAINT-LOUIS</i>
07:00-08:00	Assemblée générale annuelle et Prix / Annual General Meeting and Awards <i>PALAIS</i>
08:30-08:45	Allocutions d’ouverture / Opening Remarks <i>PALAIS</i>



08:45-09:45	<p>Conférence principale / Keynote Presentation PALAIS Présentation en anglais avec traduction simultanée / Presentation in English with simultaneous interpretation into French Accès aux soins pour les populations vulnérables « Promouvoir l'accès des femmes vulnérables aux soins en périnatalité : Une opportunité de mobilisation infirmière » Conférencière : Wendy Sword inf., Ph.D., Directrice de l'École des soins infirmiers et Doyenne associée de la Faculté des sciences de la santé de l'Université d'Ottawa, Ottawa ON</p> <p>Healthcare access for vulnerable populations “Promoting access to perinatal care for vulnerable women: Opportunities for nursing action” Presenter: Wendy Sword RN, PhD, Director of the School of Nursing and Associate Dean of the Faculty of Health Sciences, University of Ottawa, Ottawa ON</p>
09:45-10:15	Pause avec exposants / Break with exhibitors KENT/SAINT-LOUIS
10:15-11:45	<p>Sessions simultanées B / Concurrent Sessions B Session B01 - Paternité (présentations en français / presentations in French) SAINTE-FOY Session B02 - Soutien aux familles (présentations en français / presentations in French) PORTNEUF Session B03 - Women's Health BEAUPORT Session B04 - Breastfeeding DUFFERIN Session B05 - Knowledge Translation MONTMORENCY Session B06 - Innovations COURVILLE Session B07 - Perinatal Loss BEAUMONT/BELAIR</p>
11:45-13:00	Dîner, exposants, présentations par affiche / Lunch, exhibitors, poster presentations KENT/SAINT-LOUIS
13:00-14:30	<p>Sessions simultanées et Sessions thématiques C (1^{re} partie) / Concurrent Sessions and Thematic Sessions C (Part 1) Session C01 (1^{re} partie) - Session thématique – Soins de développement (présentation en français / presentation in French) SAINTE-FOY Session C02 (part 1) - Thematic Session - Obstetrical Nursing Education BEAUPORT Session C03 (part 1) - Thematic Session - Kangaroo Care BEAUMONT/BELAIR Session C04 - Symposium - Innovations (présentation en français / presentation in French) PORTNEUF Session C05 - Symposium - Fatherhood MONTMORENCY Session C06 - Symposium - Innovations DUFFERIN</p>
14:30-14:45	Pause / Break GRANDE PLACE
14:45-16:15	<p>Sessions simultanées et Sessions thématiques C (2^e partie) / Concurrent Sessions and Thematic Sessions C (Part 2) Session C01 (2^e partie) - Session thématique – Soins de développement (présentation en français / presentation in French) SAINTE-FOY Session C02 (part 2) - Thematic Session - Obstetrical Nursing Education BEAUPORT Session C03 (part 2) - Thematic Session - Kangaroo Care BEAUMONT/BELAIR Session C07 - Symposium - Innovations (présentation bilingue / bilingual presentation) DUFFERIN Session C08 - Symposium - Fatherhood MONTMORENCY Session C09 - Symposium - Innovations COURVILLE Session C10 - Symposium - Education PORTNEUF</p>
16:15-17:15	<p>Réunions de réseautage / Networking Meetings Session N01 - Infirmières de chevet / Hospital Staff Nurses SAINTE-FOY Session N02 - Santé publique et communautaire / Community and Public Health PORTNEUF Session N03 - Infirmières de pratique avancée, éducatrices / Clinical Educators and Advanced Practice Nurses COURVILLE Session N04 - Gestionnaires et directrices / Managers and Directors MONTMORENCY Session N05 - Professeures de niveau collégial et universitaire / University and College Professors BEAUPORT Session N06 - Chercheurs / Researchers BEAUMONT/BELAIR</p>
18:00	Réception / Reception PALAIS
18:30	<p>Souper et spectacle / Dinner and show PALAIS « Marguerites et saphirs » avec La famille Painchaud / “Daisies and Sapphires” featuring The Painchaud Family</p>

Survol du programme / Program at a Glance

Jour 3 - Samedi le 7 novembre / Day 3 - Saturday, November 7th

07:00-07:45	Trotte des Toonies, marche historique ou séance de Zumba / Toonie Trot or historical walk LOBBY Zumba PALAIS
07:45-08:30	Déjeuner et rencontres régionales / Breakfast and Regional Meetings PALAIS
08:30-08:45	Allocutions d'ouverture / Opening Remarks PALAIS
08:45-10:45	Sessions simultanées D / Concurrent Sessions D Session D01 - Allaitement/Relation mère-enfant (présentation en français / presentation in French) SAINTE-FOY Session D02 - Risk Management BEAUMONT/BELAIR Session D03 - New Trends: Immediate Postpartum BEAUPORT Session D04 - Breastfeeding COURVILLE Session D05 - Leadership MONTMORENCY Session D06 - Professional Practices PORTNEUF Session D07 - Mental Health DUFFERIN
10:45-11:00	Pause / Break GRANDE PLACE
11:00-12:00	Conférence principale / Keynote Presentation PALAIS Présentation en français avec traduction simultanée / Presentation in French with simultaneous interpretation into English Influence de l'environnement sur la santé humaine « Perturbateurs endocriniens et santé des femmes : l'exemple des phtalates » Conférencière : Patricia Monnier M.D., Ph.D, Obstétricienne-gynécologue et spécialiste de la fertilité, Université McGill, Montreal QC Impact of the environment on human health “Disruptors of endocrine function and women’s health: the case of phthalates” Presenter : Patricia Monnier MD, PhD, Obstetrician Gynecologist and Fertility Specialist, McGill University, Montreal QC
12:00-12:30	Allocution de clôture / Closing Remarks PALAIS
12:30-13:30	Dîner boîte à lunch et réseautage / Brown bag lunch and networking PALAIS

Programme / Program

Pré-conférence - Mercredi le 4 novembre / Pre-conference - Wednesday, November 4th

13:00-17:00 **Atelier / Workshop SAINTE-FOY** (Présentation en anglais / Presentation in English)

Presenters: Kathryn Wodrich, RN, Coordinator, Birthing Unit, London Health Sciences Centre, London ON; Dr. R. Gratton, MFM, Chief of Obstetrics at London Health sciences Centre, London ON; and Nancy Watts, RN, MN, PNC(C), Clinical Nurse Specialist, Women's and Infant's Program, Mount Sinai Hospital, Toronto ON

Jour 1 - Jeudi le 5 novembre / Day 1 - Thursday, November 5th

07:00-08:00 Déjeuner avec les exposants / Breakfast with exhibitors

KENT/SAINT-LOUIS

08:00-08:30 **Mot de bienvenue et allocutions d'ouverture / Greetings and Opening Remarks**

08:30-09:30 **Conférence principale / Keynote Presentation**
Présentation en français avec traduction simultanée /
Presentation in French with simultaneous interpretation
into English **PALAIS**

Les effets de l'engagement paternel sur l'ensemble de la famille

« Promouvoir l'engagement paternel : pourquoi, pour qui, comment ? »



Les pères d'aujourd'hui s'engagent auprès de leurs enfants de différentes manières. Le plaisir qu'ils y trouvent aide leurs enfants à grandir. Comme infirmière en périnatalité, savons-nous vraiment à quel point cette implication fait une différence dans le développement des enfants, des familles, de la société et des pères eux-mêmes ? Comment nos interventions auprès des familles peuvent-elles être plus inclusives des pères ? De quelles manières pouvons-nous reconnaître leur expertise ? Cette présentation sera l'occasion de réfléchir ensemble sur ces questions et de proposer quelques réponses.

Objectifs d'apprentissage :

- Identifier les dimensions de l'engagement paternel
- Analyser les effets de l'engagement des pères sur le développement des enfants, des pères, des familles et des sociétés
- S'approprier une intervention inclusive des pères

Conférencière : Francine de Montigny inf., Ph.D., professeure titulaire, Département des sciences infirmières, Université du Québec en Outaouais, Gatineau QC

Francine de Montigny est chercheuse boursière du Fonds québécois de recherche en santé depuis 2008, elle détient la Chaire de recherche du Canada sur la santé psychosociale des familles depuis 2010. Elle dirige le Centre d'études et de recherche en intervention familiale (CERIF), et les laboratoires novateurs « Au cœur des familles ». Détentrice d'un doctorat et d'un post-doctorat en psychologie de l'Université du Québec à Trois-Rivières (UQTR), ses recherches portent sur la santé mentale paternelle en période périnatale, le deuil périnatal de même que sur le développement de pratiques inclusives des pères au sein des familles. Elle dirige l'implantation de l'Initiative Amis des pères dans plusieurs régions du Québec. Elle est auteure de nombreuses publications sur la santé des familles, notamment le volume « La naissance de la famille » aux Éditions Chenelière.

The effects of paternal involvement on the family “Promoting paternal involvement: why, for whom, and how?”

Fathers of today are involved with their children in different ways. The pleasure they derive from this helps their children grow. As perinatal nurses, do we really know how much this involvement makes a difference in child development, on their families, in society and for fathers themselves? How can our interventions with families be more inclusive of fathers? How can we recognize their expertise? This presentation will provide an opportunity to reflect together on these topics and to propose some answers.

Learning Objectives:

- Identify the dimensions of paternal involvement
- Analyze the effects of paternal involvement on children, families and society
- Develop a practice inclusive of fathers

Presenter: Francine de Montigny RN, PhD, Professor, Department of Nursing, Université du Québec en Outaouais, Gatineau QC

Francine de Montigny is a grant researcher of the Fonds québécois de recherche en santé since 2008, she holds the Canada Research Chair in Family Psychosocial Health since 2010. Dr. de Montigny leads the Centre d'études et de recherche de recherche en intervention familiale (CERIF), and innovative laboratories “Au cœur des familles”. She holds a PhD and post-doctorate in psychology from the Université du Québec à Trois-Rivières (UQTR). Her research explores paternal mental health in the perinatal period, perinatal bereavement and the development of a family nursing practice inclusive of fathers. She leads the implementation of the Father-friendly initiative in several regions in Quebec. She is the author of several publications on family health, among others, the book “La naissance de la famille” Chenelière editors.

09:30-10:00 Pause avec les exposants / Break with exhibitors

KENT/SAINT-LOUIS

10:00-11:30 **Sessions simultanées A / Concurrent Sessions A**

Session A01 - Paternité SAINTE-FOY

Présentation en français / Presentation in French

Devenir père en contexte de vulnérabilité : besoins et soutien

Francine de Montigny Ph.D.; Louise Hamelin Brabant Ph.D.; Diane Dubeau Ph.D.

But : Ce symposium identifiera les principaux défis liés à l'étude et à l'action auprès des pères dans un contexte de vulnérabilité.

Objectifs d'apprentissage :

- Illustrer les dimensions de la vulnérabilité en période périnatale qui génèrent des besoins chez les pères en matière de soutien social
- Illustrer concrètement les manières de répondre à ces besoins, par l'intervention, des programmes de soutien, et des outils technologiques
- Traduire les réalités complexes auxquelles sont confrontés les chercheurs et les cliniciens qui s'intéressent aux pères en contexte de vulnérabilité

1- La parentalité en contexte de vulnérabilité et le soutien social en période postnatale (Axe : « Connaitre »)

Co-auteurs : Francine De Montigny, Geneviève Roch, Ginette Mbourou, Marie-Hélène Deshaies, Roxane Borgès Da Silva, Yvan Comeau

Conférencière : Louise Hamelin Brabant, Université Laval, Québec QC

2- Relais-Pères, une pratique de proximité pour rejoindre et soutenir les pères vivant en contexte de vulnérabilité socioéconomique (Axe « Évaluer »)

Co-auteurs : Geneviève Turcotte, Miguel Salmon et Jacinthe Théorêt

Conférencière : Diane Dubeau, Université du Québec en Outaouais, Gatineau QC

3- L'engagement paternel : s'ouvrir à la vie » Un DVD et un guide d'animation portant sur la paternité dans différents contextes (Axe « transfert des connaissances »)

Conférencières : Francine de Montigny et Christine Gervais, Université du Québec en Outaouais, Gatineau QC

Session A02 - Relation parent-enfant **PORTNEUF**

Présentation en français / Presentation in French

L'établissement de la relation parent-enfant à l'unité néonatale

Marie-Josée Martel inf., Ph.D.; Isabelle Milette inf., M.Sc. IPSNN (infirmière praticienne spécialisée en néonatalogie)

But : Cette conférence a pour but de décrire l'établissement de la relation parent-enfant auprès de mères et de pères d'enfants prématurés nés entre la 32e et la 37e semaine de gestation lors de l'hospitalisation à l'unité néonatale.

Objectifs d'apprentissage :

- Connaître les facteurs d'influence à la relation parent-enfant à l'unité néonatale
- Reconnaître les particularités de la relation mère-enfant et père-enfant prématuré né à partir de la 32e semaine de gestation
- Développer des pistes de réflexion afin d'aider à l'établissement de la relation parent-enfant à l'unité néonatale

Conférencières : Marie-Josée Martel et Isabelle Milette, Université du Québec à Trois-Rivières, Trois-Rivières QC

Perception des mères sur l'établissement de la relation mère-bébé en contexte d'allaitement difficile ayant mené au sevrage

Marie-Magdeleine Dubé; Linda Bell Ph.D.; Marie Lacombe Ph.D.

But : Décrire l'établissement de la relation mère-bébé selon la perspective de mères ayant sevré suite à une expérience d'allaitement difficile.

Objectifs d'apprentissage :

- Se familiariser avec l'expérience d'allaitement difficile de mères ayant choisi le sevrage malgré le choix initial d'allaiter
- Se familiariser avec les défis rencontrés par la relation mère-bébé en contexte d'allaitement difficile ayant mené au sevrage
- Envisager des pistes d'intervention pour faciliter la relation mère-bébé en contexte d'allaitement difficile

Conférencières : Marie-Magdeleine Dubé, Hôpital St-Mary, Montréal QC et Université de Sherbrooke, Sherbrooke QC

Session A03 - Newborn Health **COURVILLE**

The use of 40% oral glucose gel for the prevention and treatment of hypoglycemia in the newborn population

Shelley Keefe BN, RN, MEd, IBCLC; Kelley Lundrigan BScN, RN, IBCLC

Purpose: Our goal is to prevent hypoglycemia in the newborn population using the 40% oral glucose gel as an alternative treatment to formula supplementation or intravenous dextrose.

Learning Objectives:

- Discuss the use of 40% oral glucose gel in the neonate population
- Describe previous interventions utilized for glucose management
- Discuss the implementation of the oral glucose gel protocol at the Cape Breton Regional Hospital and review audit findings

Presenters: Shelley Keefe and Kelley Lundrigan, Cape Breton Regional Hospital, Sydney NS

Reducing neonatal procedural pain in term infants

Michelle O'Connor MN, RN, PNC(C); Martha Hohenadel RN; Liliana Garcia RN

Purpose: To present a quality improvement initiative to encourage nurses to collect newborn blood work while skin-to-skin or breastfeeding as a way to reduce neonatal procedural pain.

Learning Objectives:

- Describe the benefits of skin-to-skin and breastfeeding to reduce neonatal pain
- Overcoming practical barriers
- Discuss knowledge translation strategies to change practice

Presenters: Michelle O'Connor, Martha Hohenadel and Liliana Garcia, Sunnybrook Health Sciences Centre, Toronto ON

Identification of barriers and facilitators in implementing late-preterm protocol on a high risk perinatal unit

Jennifer Marandola RN, BSN, IBCLC, MN-APL (candidate), PNC (candidate)

Purpose: To assist perinatal and maternity units in implementing best practice guidelines related to late preterm infants.

Learning Objectives:

- Identification of barriers and facilitators of implementing late preterm protocol
- Strategies for implementing Best Practice Guidelines related to late preterm
- Further knowledge of best practice guidelines on late preterm infant

Presenter: Jennifer Marandola, McGill University Health Centre, Montreal QC

Session A04 - Breastfeeding *MONTMORENCY*

Breastfeeding support for young mothers from a maternity shelter: A qualitative study

Rosann Edwards RN, MScN, IBCLC; Wendy Peterson RN, PhD; Joy Noel-Weiss RN, PhD, IBCLC; Cathryn Fortier RN, MScN

Purpose: To explore the breastfeeding experiences of young at-risk breastfeeding mothers who either were or had resided in a local maternity shelter, inform clinical practice in providing breastfeeding supports to this population.

Learning Objectives:

- To inform nursing practice to the importance of taking a strength based-approach with at-risk mothers
- To increase awareness of issues that are unique to adolescent mothers and infants involved in the shelter system
- To inform the development of clinical interventions and breastfeeding related services unique to this population of breastfeeding mothers

Presenter: Rosann Edwards, Ottawa Public Health/University of Ottawa, Ottawa ON

Tailoring breastfeeding support for young women through a youth informed innovation process

Christina Cantin RN, MScN, PNC(C); Wendy Peterson RN, PhD; Nathalie Fleming MD

Purpose: To describe the design, implementation and evaluation of a youth-informed breastfeeding program for young mothers.

Learning Objectives:

- To describe the characteristics of a breastfeeding program that are of importance to young mothers
- To share “lessons learned” in the development and implementation of this youth-informed breastfeeding program
- To describe preliminary results of the breastfeeding program evaluation

Presenters: Christina Cantin and Wendy Peterson, Champlain Maternal Newborn Regional Program, Ottawa ON

Father involvement improves early initiation and exclusive breastfeeding in Vietnam

Lynn A. Rempel RN, PhD; Tran H. Bich MD, PhD; John K. Rempel PhD; Dinh P. Hoa MD, PhD

Purpose: This presentation will describe a quasi-experimental study testing the effects of an intervention that assists fathers to be more involved in the lives of their infants in a variety of ways, including by supporting breastfeeding. The presentation will describe the 1-month postpartum results and suggest implications of the findings for increasing breastfeeding success by involving fathers in the parenting team.

Learning Objectives:

- Participants will be able to describe the components of the Father Involvement: Saving Brains in Vietnam intervention
- Participants will be able to discuss the concept of responsive father involvement in the parenting team
- Participants will be able to identify facets of the intervention that could be valuable in their nursing practice context

Presenter: Lynn Rempel, Brock University, St. Catharines ON

Session A05 - Supporting Vulnerable Families *BEAUPORT*

Promoting the strengths of families struggling with substance use through innovative education

Nancy Hewer RN, MSN, PNC(C); Tara Loutit RN, MN

Purpose: The purpose of this presentation is to explore the benefits of keeping and caring for substance using women and their infants together in order to promote the strengths of families impacted by problematic substance use.

Learning Objectives:

- Explore the challenges associated with caring for families struggling with substance use
- Discuss how examining health care provider's attitudes can positively impact the care of marginalized families
- Share our innovative approach to educating Perinatal/ Neonatal nurses about a strength based approach to caring for families impacted by substance use

Presenters: Nancy Hewer and Tara Loutit, British Columbia Institute of Technology, Burnaby BC

New beginnings: Improving the care of mothers on Methadone Maintenance Therapy and their newborns

Lisa Merrill RN, MN; Susan Harrison RN, BN

Purpose: To describe the development, implementation and outcome of an innovative change in practice to improve the care of mothers on MMT and their newborns.

Learning Objectives:

- To describe an innovative change in practice to improve the care of mothers on methadone maintenance therapy (MMT) and their newborns
- To identify strategies that promote the strengths of families and support them in achieving their full potential
- To describe nursing implications in the promotion of best practice in the care of mothers on MMT and their newborns

Presenters: Lisa Merrill and Susan Harrison, Women's Hospital, Health Sciences Centre, Winnipeg MB

Understanding development of the maternal-fetal relationship in women who use substances

Michelle Foulkes NP-PHC, PhD(c); Wendy Peterson RN, PhD

Purpose: To understand the intersecting variables that influence maternal fetal attachment and the adoption of positive health behaviours in women who use substances during pregnancy with complex psychosocial histories including trauma, sexual abuse or neglect through a critical feminist lens. The need to adopt harm reduction strategies as an important component of perinatal nursing care within a social justice framework will be discussed.



Learning Objectives:

- Increase understanding of the barriers and enablers that influence how maternal-fetal attachment develops from the perspective of women who use substances
- Support learning around how maternal-fetal attachment influences future maternal-infant attachment and the potential for disturbed attachment patterns that may impact cognitive, emotional and social development of infants and children
- Discuss the need for inter-sectional collaboration and changes in health policy, to address the complex needs of this population

Presenters: Michelle Foulkes and Wendy Peterson, University of Ottawa, Ottawa ON

.....
Session A06 - Professional Practices BEAUMONT/BELAIR
.....

Understanding the collaborative experiences of midwives and nurses using results from a qualitative systematic review

Danielle Macdonald MN, RN; Erna Snelgrove-Clarke RN, PhD; Marsha Campbell-Yeo RN, NNP-BC, PhD; Megan Aston RN, PhD; Melissa Helwig MLIS; Kathy A. Baker RN, ACNS-BC, FAAN, PhD

Purpose: To present synthesized qualitative evidence about the experiences of midwives and nurses collaborating to provide birthing care.

Learning Objectives:

- Develop an understanding of the experiences of midwives and nurses who collaborate with each other through synthesized qualitative evidence
- Increase awareness about the importance of enhancing collaboration between midwives and nurses
- Recognize the importance of future research in this area

Presenter: Danielle Macdonald, Dalhousie University, Halifax NS

.....
Holding on to Normal Birth in a sea of change
.....

Susan Guest RN, MN, IBCLC, PNC; Sheryl Hewko RN, BScN, MSc

Purpose: This initiative builds on the strong foundation of supportive care provided to labouring women while exploring the role of nursing best-practice in propagating and augmenting a philosophy of birth as a natural, physiologic process.

Learning Objectives:

- To illustrate how nursing can influence and support the philosophy of Normal Birth and associated practices
- To demonstrate how a strong philosophical belief can be harnessed to support nursing best practice while effecting a cultural change
- To illustrate how change can be an opportunity to review, enhance and improve consistency in care practices

Presenter: Susan Guest, Mount Sinai Hospital, Toronto ON

.....
Representations of technology, birth and women centred care in childbirth: An intergenerational perspective
.....

Anne Simmonds RN, PhD; Melanie Spence BA (Health Studies), BScN (Student)

Purpose: To explore inter-generational perspectives on technologies in childbirth and implications for nursing education and practice.

Learning Objectives:

- To foster critical discussion on the place of technologies in childbirth and the personal, relational and contextual factors influencing its use
- To examine historical and current nursing practice experiences related to application of technology in childbirth through intergenerational artistic representations (poetry and soundscape)
- To identify strategies for teaching, mentoring and supporting undergraduate students and novice nurses to develop and sustain women and family-centred care related to the judicious use of technology in everyday intrapartum practice

Presenters: Anne Simmonds and Melanie Spence, Lawrence S. Bloomberg Faculty of Nursing, University of Toronto, Toronto ON

.....
Session A07 - New Trends: Labour DUFFERIN
.....

An innovative process for addressing an increased demand for induction of labour

Danita Lang RN, BScN, PNC(C); Jodie Bigalky RN, MN, PNC(C)

Purpose: To share a process for prioritizing induction of labour requests that increases patient safety and reduces the number of inductions that are performed in the absence of acceptable maternal or fetal conditions.

Learning Objectives:

- Provide a brief overview of evidenced-based recommendations for induction of labour
- Share a process for developing, implementing, and evaluating a system that prioritizes induction of labour requests
- Present induction of labour guidelines that have improved patient safety and decreased the number of elective inductions in our setting

Presenters: Danita Lang and Jodie Bigalky, Regina Qu'Appelle Health Region, Regina SK

.....
Quality improvement: Postdate induction project
.....

Stephanie Pearsall RN, BScN, MHST; Shannon Maier RN, BScN, PNC(C)

Purpose: The purpose of this presentation is to share experiences and knowledge gained to other health care providers in obstetrics around a quality improvement initiative undertaken in order to decrease the number of postdate inductions performed under the gestational age of 41 weeks.

Learning Objectives:

- Discuss the literature around postdate inductions and best practice
- Share key concepts and tools in quality improvement, leadership and change management utilized to change practice and culture
- Share data/results of this quality improvement project

Presenter: Shannon Maier, Guelph General Hospital, Guelph ON



Building families: A qualitative study about transgender men who experienced pregnancy and birth

Joy Noel-Weiss RN, IBCLC PhD; Trevor MacDonald BA(Hon); Michelle Walks PhD; MaryLynne Biener IBCLC; Alanna Kibbe RM; Elizabeth Myler BSN, RN, IBCLC; Diana West BA, IBCLC

Purpose: The purpose of this presentation is to share the results of our research study and to offer nurses insights which will help them provide sensitive, respectful care and build trust relationships with transgender men requiring perinatal nursing care.

Learning Objectives:

- To summarize the study participants' experiences of pregnancy and birth
- To build respectful, positive relationships with transgender clients and patients
- To state three changes conference participants could make in their own practice

Presenter: Joy Noel-Weiss, University of Ottawa, Ottawa ON

11:30-12:45 Dîner, exposants, présentations par affiche / Lunch, exhibitors, poster presentations **KENT/SAINT-LOUIS**

12:45-15:45 **Sessions spécialisées / Specialty Sessions**
(pause 14:15-14:30) / (break 14:15-14:30)

Session SS01 - Physiothérapie périnéale SAINTE-FOY

Présentation en français / Presentation in French

« Périnée, zone taboue - Comment le protéger en pré-, post-partum et son importance chez la femme »

La formation présente d'abord les notions théoriques sur le plancher pelvien et autres structures qui forment la base interne du bassin et supportent les organes tels la vessie, urètre et rectum. Comme tous les muscles du corps, le plancher pelvien peut devenir affaibli, étiré, trop tendu ou douloureux. Dans ces cas, on parle d'une dysfonction du plancher pelvien. Il existe aussi plusieurs problématiques pouvant être dépistées par les infirmières œuvrant en périnatalité.

Objectifs d'apprentissage :

- Expliquer les fonctions essentielles du plancher pelvien et la physiothérapie périnéale
- Appliquer des méthodes de protection du plancher pelvien et prolapsus lors de la grossesse de l'accouchement et en post-partum
- Identifier les signes et symptômes démontrant une faiblesse importante ou problématiques du plancher pelvien

Conférencière : Josée Chabot B.Sc., Kinatex Sports Physio L'Ornière, Québec QC

Josée Chabot détient un baccalauréat en Kinésiologie de l'Université Laval, un baccalauréat en physiothérapie de l'Université d'Ottawa et a complété un microprogramme de 2^e cycle en rééducation périnéale et pelvienne de l'Université de Montréal. Elle compte plusieurs années d'expérience comme physiothérapeute auprès d'une clientèle en douleur persistante et, depuis 2010, auprès de la clientèle en rééducation périnéale exclusivement.

Session SS02 - Adapter ses pratiques aux réalités des couples de même sexe PORTNEUF

Présentation en français / Presentation in French

« Regards sur les familles homoparentales »

Cette formation vous permettra d'accroître vos connaissances et vous suggérera des pistes concrètes d'intervention afin de favoriser une meilleure intégration des enfants et des familles homoparentales. Cette formation répond aux besoins exprimés par des professionnels qui veulent être mieux outillés pour adapter leurs interventions aux besoins des couples de même sexe. Cette formation fournit également des renseignements, des stratégies, des exemples de pratiques, ainsi qu'un vaste éventail de ressources pour accompagner chaque personne et son milieu de travail dans leurs démarches de changement.

Objectifs d'apprentissage :

- Connaître les réalités des familles homoparentales
- Répondre aux besoins des couples de même sexe en contexte de périnatalité

Conférencières : Jeanne Lagabrielle et Marie-Josée Palardy, Coalition des familles homoparentales (CFH), Québec QC

Jeanne Lagabrielle est enseignante et formatrice pour la Coalition des Familles LGBT, tant pour les intervenants que pour les parents et futurs parents LGBT. Elle-même mère, avec sa conjointe, d'un jeune enfant, elle a vécu de l'intérieur les services de périnatalité.

Session SS03 - Childbirth BEAUMONT/BELAIR

“Trusting birth and working with the sensations of birth: The Bonapace Method”

Childbirth has been associated with one of the most painful events a woman will experience in her life. Many women fear childbirth and some prefer a Cesarean section to avoid the pain of birth. What if the phenomenon of pain is a social, cultural and religious construct? This workshop will address some of the best kept secrets that help women give birth in a safe, satisfying and pleasant way using their endogenous resources.

Learning Objectives: At the end of this training, participants will become familiar with the Bonapace Method, a program that helps women and their partners enjoy and trust the process of birth. Participants will learn to:

- Activate two important endogenous resources women have: neurophysiology and hormones
- Practice gestures to support women's endogenous resources
- Reduce procedures that create and increase sensations

Presenters: Julie Bonapace MEd, and Malika Morisset Bonapace D.Psy, Gatineau QC

Julie Bonapace is a pain specialist/researcher and a family mediator who negotiated divorces for more than a decade. She is the main author of the Canadian Guideline on Pain Management for the SOGC to be published in 2016. Her experience of giving workshops around the world to midwives, physicians, nurses and obstetricians and her work with thousands of expectant mothers and fathers has convinced her of the important resources women have to give birth both by trusting themselves and the process of birth.

Malika Morisset Bonapace holds a doctoral degree in Clinical Psychology (D.Psy). Her dissertation draws upon Self-Determination Theory and the concept of maternal gatekeeping to further the understanding of father's early experience of parenthood. Her clinical experience is predominantly in areas relating to perinatal psychiatry.

.....

Session SS04 - Late Preterm DUFFERIN

.....

“The challenges of caring for late preterm and early term infants”

This workshop will examine the short- and long-term morbidities associated with late preterm and early term infants and will address strategies to prevent births before term and to mitigate risks for babies born early. Specific care practices related to each potential area of risk will be discussed and pearls for parent teaching will be included.

Learning Objectives:

- Outline the morbidities associated with late-preterm and early term birth
- Describe strategies to reduce the risks inherent to late-preterm infants
- Discuss points important to parent teaching related to late-preterm infants

Presenter: Debbie Fraser MN, RNC-NIC, Athabasca University, Winnipeg MB

Debbie Fraser is an Associate Professor and the Director of the Nurse Practitioner program in the Faculty of Health Disciplines at Athabasca University also holds an appointment in the Department of Pediatrics, Faculty of Medicine and the Faculty of Nursing at the University of Manitoba (U of M). She is a member of the AWHONN Scientific Team for the Late Preterm Infant Guidelines. Debbie maintains an active practice in the NICU at St Boniface General Hospital and is the Editor-in-Chief of Neonatal Network: The Journal for Neonatal Nursing. She is the author of two nursing textbooks and over 70 book chapters and peer-reviewed articles on topics related to high risk newborns. Deb was recently awarded the Canadian Nurses' Association Order of Merit for nursing education.

.....

Session SS05 - Skin-to-Skin COURVILLE

.....

“Why skin-to-skin for mother and baby at birth?”

The speaker will discuss the evidence underlying skin-to-skin between mother and baby at birth. She will explain why this is considered as the safest transition for both mother and baby after vaginal birth as well as after caesarean section. She will also share an unpublished document on how to safely facilitate and support this first encounter between mother and baby. Group work and discussions with participants will follow this presentation.

Learning Objectives: At the end of this presentation, participants will be able to:

- Understand the exhaustive evidence for uninterrupted immediate skin-to-skin between mother and baby after vaginal or caesarean birth
- Illustrate how immediate skin-to-skin should take place to protect newborn safety
- Consider the impact of the new research findings on their clinical practice or their recommendations to parents

Presenter: Louise Dumas RN, MSN, PhD, Gatineau QC

Louise is honorary professor-researcher associated with the Department of Nursing sciences at the Université du Québec en Outaouais. Most of her research has focused on perinatal practices, breastfeeding, and patient education. As guest researcher at the Karolinska Institutet, she is part of a Russian-Swedish-Canadian team studying Russian swaddling, skin-to-skin, and mother-infant separation at birth. Louise is lead assessor for the WHO/ UNICEF Baby-Friendly Hospital Initiatives and an active member of the planning committee for the 2016 WHO meeting for BFHI implementation in industrialized and developing countries. She is member of the Breastfeeding Committee for Canada and the Quebec Baby-Friendly assessment committees.

.....

Session SS06 - Research and Knowledge Transfer BEAUPORT

.....

“Moving from knowledge to action: Successful strategies for implementing and sustaining best-practices in perinatal and women's health nursing”

Despite the ever-increasing availability of evidence-based guidelines for perinatal and women's health nurses, nursing practice changes remain notoriously difficult to implement and sustain over time. A growing emphasis on patient safety and quality improvement has accelerated the pace of change in health care settings, contributing to “change fatigue” and failed efforts to improve nursing care practices. However there is a growing body of knowledge related to barriers and facilitators to the uptake of evidence in nursing care, as well as how to strategically plan for practice improvement initiatives. The goal of this interactive workshop is to provide participants with new knowledge, strategies and resources that can be used to help plan for the successful implementation of evidence-based nursing practices. Participants will have the opportunity to use examples from their own clinical practice to highlight the complex process of practice change and to share helpful change management strategies.

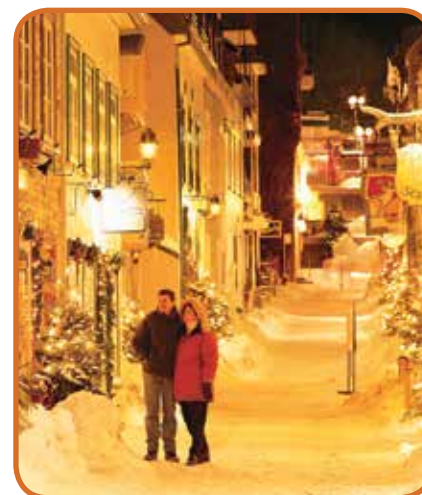
Learning Objectives:

- Review the latest research and most commonly-used models related to KT in nursing
- Identify difficult-to-change nursing care practices in your work settings and critically examine local obstacles and potential supports for practice change efforts
- Discuss successful strategies for implementing and sustaining evidence-based nursing care practices

Presenters: Sonia Semenic RN, PhD, McGill University Health Centre, Montreal QC and Angela Bowen RN, PhD, University of Saskatchewan, Regina SK

Sonia Semenic is an Associate Professor, Ingram School of Nursing, McGill University; Nurse Scientist for the McGill University Health Centre, and interim Co-Director of the Quebec Nursing Intervention Research Network. She teaches maternal-child nursing, and has a program of research related to contextual influences on the implementation of evidence-based perinatal nursing care practices.

Angela Bowen is a Professor in the College of Nursing, University of Saskatchewan. Angela teaches maternal child nursing to undergraduate students and research methodology to graduate students. Her program of research, Maternal Mental Health, has involved many different studies, including funded knowledge translation and policy development projects.



Session SS07 - *Grossesse à risque élevé (GARE)*

Présentation en français / Presentation in French

« Suivi des grossesses à risque à domicile une réalité à découvrir »

Le but premier est de faire connaître le programme de maintien à domicile pour les grossesses à risque du CHU Sainte-Justine et ainsi inspirer d'autres centres à développer leur propre programme. À partir de ces 3 sujets incontournables, découvrez comment implanter un programme de suivi à domicile avec succès :

- Origine du projet et l'implantation du programme de maintien à domicile (GAREDO)
- Les hauts et les bas de la réalité d'un suivi à domicile d'une grossesse à risque élevé
- Les composantes essentielles pour développer un tel programme

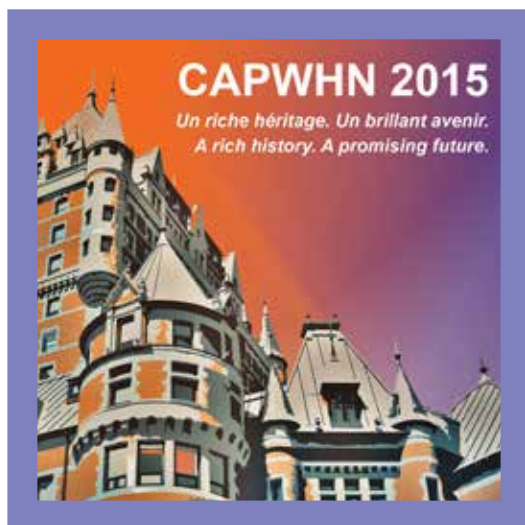
À partir de cette présentation, vous pourrez réfléchir sur le comment implanter un tel programme selon vos caractéristiques. Ce partage reflète plus d'une dizaine d'années d'expérience dans ce domaine.

Objectifs d'apprentissage :

- Connaître les avantages et les défis d'un suivi de grossesse à risque à domicile
- Comprendre la réalité d'une journée dans la vie d'une infirmière en suivi à domicile
- Connaître les composantes essentielles pour développer un programme de qualité et sécuritaire

Conférencière : Dominique Vincent inf., BSc.N., Centre Hospitalier Universitaire Sainte-Justine, Montréal QC

Dominique Vincent est infirmière bachelière au CHU Sainte-Justine depuis 40 ans. Dynamique et engagée elle a œuvré en chirurgie pédiatrique pour ensuite développer son expertise en salle d'accouchement. En 1995, elle a instauré le programme de suivi de grossesse à risque à domicile. Sa passion est toujours bien présente!



15:45-17:00 Conférence principale / Keynote Presentation **PALAIS**

Présentation en anglais avec traduction simultanée / Presentation in English with simultaneous interpretation into French

« Le Moi inc. »



« Le Moi inc. » signifie que nous sommes tous propriétaires d'une entreprise qui comprend plusieurs départements, dont nous sommes responsables. Nos décisions et notre attitude influencent directement notre succès. Nous devons accepter que les défis sont une partie intégrante de notre vie personnelle et professionnelle, mais les résultats que vous espérez dépendront uniquement de votre attitude et de la façon dont vous leur ferez face. Vous verrez qu'une attitude positive et gagnante constitue la clé du succès. Cette conférence ne

laisse personne indifférent; elle stimule le succès personnel et valorise la réussite en équipe.

Conférencier : Sylvain Boudreau, Québec QC

Depuis 1994, Sylvain Boudreau parcourt le pays en faisant ce qui le passionne : partager ses concepts de valorisation et de responsabilisation. Son ardeur, son enthousiasme et son dynamisme font de chacune de ses prestations une invitation au dépassement et à l'épanouissement, aussi bien au plan personnel que professionnel. Communicateur hors pair, il livre à un auditoire varié des messages percutants avec humour et fluidité.

"The Me Inc."

The aim of this seminar is to remind audiences that everyone is first and foremost the owner and person in charge of a great enterprise called the "Self Inc." and that we are all responsible for our own personal success. Throughout the seminar, audiences are shown how to use their inner resources to surpass themselves and reap in the fruits of their efforts, and thus boost their self-esteem. They also learn that the collective success of a business, family or society as a whole can only be achieved if based first and foremost on the success of each individual.

Presenter: Sylvain Boudreau, Quebec City QC

Sylvain Boudreau has been a motivational speaker since 1994 and is considered among the most prolific in Québec. Sylvain loves to share his passion for a winning attitude and success. An outstanding communicator, he conveys powerful messages to a wide variety of audiences with his fluid delivery, enthusiasm and humour.

17:00-17:30 Présentations par affiche / Poster presentations

(voir liste séparée - page 29 / listed separately - page 29) **GRANDE PLACE**

17:30-19:30 Réception avec les exposants / Reception with exhibitors **KENT/SAINT-LOUIS**

Jour 2 – Vendredi le 6 novembre / Day 2 – Friday, November 6th

- 07:00-08:30 Déjeuner avec les exposants / Breakfast with exhibitors **KENT/SAINT-LOUIS**
- 07:00-08:00 **Assemblée générale annuelle et Prix / Annual General Meeting and Awards PALAIS**
- 08:30-08:45 **Allocutions d'ouverture / Opening Remarks PALAIS**

08:45-09:45 **Conférence principale / Keynote Presentation PALAIS**

Présentation en anglais avec traduction simultanée / Presentation in English with simultaneous interpretation into French

Accès aux soins pour les populations vulnérables **« Promouvoir l'accès des femmes vulnérables aux soins en périnatalité : Une opportunité de mobilisation infirmière »**



L'accès aux soins est un important déterminant de la santé. De nombreuses études ont identifié des facteurs qui peuvent faciliter ou contraindre l'accès aux soins en périnatalité chez les femmes vulnérables qui présentent des risques qui menacent leur santé. Ces facteurs comprennent les caractéristiques de l'individu et le plus souvent, des caractéristiques inhérentes au système de santé. D'autres études mettent en évidence des stratégies d'amélioration de l'accès qui sont efficaces. Cette présentation offrira un aperçu de la recherche dans ce champ d'intérêt et mettra en évidence qu'en dépit des savoirs qui sont générés, l'iniquité au regard de l'accès aux soins persiste. Il y aura une exploration du rôle que doit jouer

l'infirmière dans le colmatage du fossé recherche-pratique/ lignes directrices.

Objectifs d'apprentissage :

- Identifier les concepts d'accès et de vulnérabilité
- Décrire les facteurs contraignants et facilitateurs ainsi que les stratégies qui s'appliquent à l'accès aux soins pour les femmes vulnérables
- Expliquer le rôle de représentation que les infirmières peuvent assumer afin de promouvoir l'accès aux soins en périnatalité

Conférencière : Wendy Sword inf., Ph.D., Directrice de l'École des soins infirmiers et Doyenne associée de la Faculté des sciences de la santé de l'Université d'Ottawa, Ottawa ON

Avant de rejoindre les rangs de l'Université d'Ottawa le 1er février 2015, Wendy Sword a eu une longue carrière académique de plus de 28 ans à l'Université McMaster comme professeure. Le programme de recherche de Dre Sword se concentre sur la santé périnatale et sur les soins de santé. Son travail est financé en grande partie par les Instituts de recherche en santé du Canada et comprend : des études longitudinales multi-sites sur les résultats en santé postpartum; l'utilisation des services et les coûts de soins de santé; le développement et le rodage du questionnaire « Quality of Prenatal Care Questionnaire »; le transfert des connaissances et l'échange de stratégies pour les agences traitant les dépendances chez les femmes au Canada; ainsi que des études utilisant des méthodologies mixtes au sujet des facteurs pris en compte par les femmes et les professionnels de la santé dans la prise de décision sur la méthode d'accouchement à la suite d'une césarienne.

Healthcare access for vulnerable populations **“Promoting access to perinatal care for vulnerable women: Opportunities for nursing action”**

Access to health care is an important determinant of health. Numerous studies have identified factors that facilitate and hinder access to perinatal care among women who are vulnerable and at risk for poor health. These factors include individual characteristics and, more often, characteristics of the health care system. Other studies provide evidence of effective strategies to improve access. This presentation will provide an overview of the research in these areas and highlight that in spite of this knowledge, there continue to be inequities in access. Nurses' role in closing the research-practice/policy gap will be explored.

Learning Objectives:

- Understand the concepts of access and vulnerability
- Describe barriers and facilitators related to access to perinatal care for vulnerable women and strategies to improve access
- Explain the advocacy roles nurses can play to promote equity in access to perinatal care

Presenter: Wendy Sword RN, PhD, Director of the School of Nursing and Associate Dean of the Faculty of Health Sciences, University of Ottawa, Ottawa ON

Wendy Sword has enjoyed a long-standing academic career, having been a Professor at McMaster University for over 28 years before assuming her role at the University of Ottawa on February 1, 2015. Dr. Sword's program of research focuses on perinatal health and health services. Her work is funded primarily by the Canadian Institutes of Health Research and includes: multi-site longitudinal studies of postpartum health outcomes, service use, and costs of care; development and testing of the Quality of Prenatal Care Questionnaire; knowledge transfer and exchange strategies for addictions agencies serving women in Canada; and a mixed methods study of factors women and maternity care providers consider when deciding on delivery method following a primary cesarean section.

10:15-11:45 **Sessions simultanées B / Concurrent Sessions B**

Session B01 - Paternité SAINT-FOY

Présentations en français / Presentations in French

Accompagner les pères vivant en contexte de vulnérabilité : un défi pour les intervenants des SIPPE

Kate St-Arneault inf., M.Sc.inf.; Francine de Montigny inf. Ph.D.; Christine Gervais inf. Ph.D.

But : Cette étude explore les perceptions et croyances des intervenants à propos de leurs pratiques professionnelles à l'égard des pères.

Objectifs d'apprentissage :

- Identifier les croyances et perceptions qui pourraient limiter les interactions entre professionnels et pères vivant en contexte de vulnérabilité
- Comprendre l'importance d'intégrer les pères dans les services destinés aux familles vulnérables
- Repérer ce dont les intervenants des services sociaux et de santé ont besoin pour être en mesure de fournir des services inclusifs des pères

Conférencière : Christine Gervais, Université du Québec en Outaouais, Gatineau QC

Expérience paternelle : Dualités vécues par des pères engagés

Christine Gervais Ph.D.; Francine de Montigny Ph.D.; Julie Garneau, étudiante à la maîtrise en psychoéducation

But : Cette présentation vise à mieux comprendre le vécu des pères qui choisissent de s'engager auprès de leur enfant ainsi que les enjeux du développement de cet engagement.

Objectifs d'apprentissage :

- Définir l'engagement paternel et son importance pour les familles
- Décrire les représentations des pères de leur rôle paternel
- Identifier les enjeux vécus par les pères à travers leur engagement

Conférencière : Christine Gervais, Université du Québec en Outaouais, St-Jérôme QC

Une étude comparative entre les perceptions des pères et celles des infirmières concernant les besoins des pères francophones en situation minoritaire à Ottawa

Viola Polomeno inf., Ph.D.

But : Les objectifs de cette étude sont de : 1) comparer les perceptions des pères francophones en situation minoritaire avec celles des infirmières concernant les besoins des pères durant la période périnatale et 2) déterminer si les besoins des pères sont répondus par les infirmières œuvrant en périnatalité.

Objectifs d'apprentissage :

- Informer les intervenants œuvrant en périnatalité sur les besoins des pères durant la période périnatale
- Proposer des changements à la pratique clinique des infirmières œuvrant en périnatalité concernant les besoins des pères

Conférencière : Viola Polomeno, Université d'Ottawa-École des sciences infirmières, Ottawa ON

Session B02 - Soutien aux familles **PORTNEUF**

Présentations en français / Presentations in French

Les rencontres prénatales : sont-elles utiles? La perception des couples parentaux franco-ontariens de la région d'Ottawa

Denise Moreau inf. Ph.D.; Viola Polomeno inf., Ph.D.

But : 1) Présenter les résultats obtenus auprès des couples quant à la nature et à l'utilité des cours prénataux; 2) Proposer des changements aux cours prénataux en termes de contenu et d'approche.

Objectifs d'apprentissage :

- Informer les intervenants œuvrant en périnatalité sur ce que les couples pensent et proposent pour les rencontres prénatales
- Proposer des changements aux rencontres prénatales en termes de contenu et d'approche

Conférencières : Denise Moreau et Viola Polomeno, Université d'Ottawa-École des sciences infirmières, Ottawa ON

Utilisation et retombées d'un programme de soutien postnatal à domicile offert par des centres de ressources périnatales

Geneviève Roch inf. Ph.D.; Roxane Borgès Da Silva Ph.D.; Marie-Hélène Deshaies M.A., Ph.D. (Cand.); Louise Hamelin-Brabant inf. Ph.D.; Francine de Montigny inf. Ph.D.; Ginette Mbourou Azizah Ph.D.; Christophe Tremblay étudiant M.Sc.; Stéphane Turcotte M.Sc.

But : Présenter les résultats d'une étude ayant pour objectifs de : 1) Décrire l'utilisation des services d'un programme de soutien postnatal à domicile, appelé relevailles, qui est offert par des centres de ressources périnatales (CRP); 2) Évaluer les retombées des relevailles auprès des familles en expliquant en quoi ce programme répond à leur expérience de vulnérabilité et aux besoins les motivant à y avoir recours.

Objectifs d'apprentissage :

- Reconnaître les différents indicateurs qui témoignent de l'utilisation du service de relevailles offert par les CRP
- Identifier les dimensions de vulnérabilité en présence et les besoins exprimés par les familles utilisatrices de relevailles
- Discuter des retombées des relevailles et de la complémentarité de ce service avec ceux offerts par les infirmières

Conférencières : Geneviève Roch, Université Laval, Faculté des sciences infirmières; Centre de recherche du CHU de Québec-Université Laval, Québec QC et Francine de Montigny, Université du Québec en Outaouais, Gatineau QC

Mobilisation des connaissances relatives à un programme de soutien postnatal à domicile

Geneviève Roch inf., Ph.D.; Marie-Hélène Deshaies M.A., Ph.D. (Cand.); Irene Andrea Acosta Moscoso inf., étudiante M.Sc.; Roxane Borgès Da Silva Ph.D.; Christophe Tremblay étudiant M.Sc.; Milène Arsenault inf. étudiante M.Sc.; Ginette Mbourou Azizah, Ph.D.; Francine de Montigny inf. Ph.D.

But : Présentation des constats préliminaires issus d'un projet de transfert des connaissances avec les organismes membres du Réseau des Centres de ressources périnatales (CRP). Ce projet vise la consolidation des expertises entourant la mise en œuvre d'un programme de soutien postnatal à domicile appelé relevailles. Ce programme ayant fait l'objet d'une recherche collaborative réalisée avec les CRP, les constats se rapportent aux stratégies utilisées pour mobiliser les connaissances développées auprès des intervenants des CRP, des professionnels de la santé et des familles.

Objectifs d'apprentissage :

- Décrire les stratégies de transfert des connaissances mobilisées avec des intervenants issus d'organismes en périnatalité
- Discuter du contenu des stratégies de formation utilisées en fonction des objectifs d'apprentissage visés, de leur utilisation et de l'appréciation des utilisateurs
- Démontrer la pertinence de l'intégration des technologies dans les stratégies de transfert des connaissances avec des organismes en périnatalité

Conférencière : Geneviève Roch, Université Laval, Faculté des sciences infirmières / Centre de recherche du CHU de Québec - Université Laval, Québec QC

Session B03 - Women's Health **BEAUPORT**

Antenatal Home Care Program postpartum hypertension follow up: A description of service delivery and a retrospective descriptive look gestational hypertension after delivery

Mary Lohre RN, BN; Karen Daeninck RN, BN; Carmen Curtis RN, BN

Purpose: The literature on postpartum hypertension is limited, but it does suggest that women whose pregnancy was complicated by hypertension have approximately 50% chance that their condition will continue to be a significant

health concern in the postpartum period. First 2 weeks post delivery are the critical time for exacerbation of this condition. The purpose of the Antenatal Home Care Program (AHCP) postpartum hypertension follow up was twofold. Firstly the follow up provides hypertension related care in the first two weeks post delivery. Secondly, the hypertension data is being collected and analyzed. This data is used to critically evaluate service delivery as well as describe this condition in the immediate postpartum period.

Learning Objectives:

- Describe the Winnipeg Region AHCP Postpartum Hypertension follow up
- Describe the resolution of hypertension in the postpartum in Winnipeg Region women who were on the AHCP for management of their hypertensive conditions
- Describe the implications for nursing practice based on the 2011-2013 Winnipeg Region AHCP Postpartum hypertension data

Presenters: Mary Lohre and Karen Daeninck, Winnipeg Regional Health Authority, Winnipeg MB

Women, obesity and mental health: Alarming facts

Caroline Cyr Ph.D.(c)

Purpose: This study aims to describe and understand the perception of the experience of obese patients in treatment using indicators such as depression, anxiety, eating disorders, quality of life and expectations regarding weight.

Learning Objectives:

- Explore the impact of obesity on mental health
- Identify risk factors in developing a mental health disorder in the context of obesity
- Understand the role of professionals in mental health prevention for obese patients

Presenter: Caroline Cyr, Université du Québec en Outaouais, Gatineau QC

Experiences and satisfaction with intrapartum care: A comparison of normal weight women and obese women

Christine Finnbogason RN, PNC(C); Maureen Heaman RN, PhD

Purpose: The purpose of this study is twofold: (1) to compare childbirth experiences and satisfaction with intrapartum care in normal weight and obese women, and (2) to determine factors associated with satisfaction with intrapartum care.

Learning Objectives:

- Summarize the thesis research findings
- Describe if and how satisfaction with intrapartum care and childbirth expectations differ between women in normal or obese pre-pregnancy weight groups
- Describe factors that may influence satisfaction with intrapartum care

Presenter: Christine Finnbogason, Women's Hospital/University of Manitoba, Winnipeg MB

Session B04 - Breastfeeding DUFFERIN

Protecting, promoting and supporting the breastfeeding experience through creative and interactive online learning

Siwon Kim RN, MSN; Reina Van Lagen RN, MSN

Purpose: The purpose of this presentation is to showcase an innovative online learning modality in order to protect, promote and support women's breastfeeding experiences.

Learning Objectives:

- Discuss the motivation for a provincial online breastfeeding course in the province of British Columbia
- Share an innovative and interactive online breastfeeding education curriculum
- Evaluate the implications of online education for health care providers working with breastfeeding mother/infant dyads

Presenters: Siwon Kim and Reina Van Lagen, British Columbia Institute of Technology, Burnaby BC

The creation and evaluation of an online co-parenting breastfeeding course

Jennifer Abbass Dick RN, PhD; Jaymie Koroluk MEd; Amber Newport RN, BScN; Joanne Huizinga RN, BScN; Fangli Xie MSc, MHSc; Shelley Alcock Brillinger RN, BScN, MPH; Cindy-Lee Dennis PhD

Purpose: The purpose of this study was to create an innovative online breastfeeding course for parents which targeted both mothers and fathers and to evaluate the effect the course had on infant feeding attitude, breastfeeding self-efficacy, co-parenting and breastfeeding knowledge.

Learning Objectives:

- To illustrate the component of an on-line co-parenting breastfeeding course reported as most important to include by mothers and fathers
- To discuss the process involved in creating an on-line co-parenting breastfeeding course for mothers and fathers
- To communicate the effectiveness of an on-line co-parenting breastfeeding course on increasing infant feeding attitude, breastfeeding self-efficacy and breastfeeding knowledge

Presenter: Jennifer Abbass Dick, University of Ontario Institute of Technology, Oshawa ON

A long and winding road: Promoting, protecting and supporting breastfeeding in the NICU

Beth Nolson RN, IBCLC; Luisa King RN, IBCLC

Purpose: Feeding a preterm infant can be a difficult journey with unique challenges and unexpected obstacles that the dyad may face while learning to breastfeed. Nurses need to develop best practices that promote, protect, and support the mother as she establishes her milk supply and works to breastfeed her infant while balancing the exceptional growth requirements of the fragile preterm.

Learning Objectives:

- Describe several of the unique barriers and challenges faced by a breast feeding dyad in the NICU
- Identify key strategies that promote, protect and support breastfeeding in the NICU
- When applicable, apply these strategies to the learner's working environment

Presenters: Beth Nolson and Luisa King, Sunnybrook Health Sciences Centre, Toronto ON

Session B05 - Knowledge Translation MONTMORENCY

Creative partnerships with actors: Simulated home visiting with new families by student nurses

Faith Wight Moffatt PhD, RN; Maureen White MN, RN; Catherine Sheffer RN, PhD(c), PNC(C)

Purpose: To describe and discuss the impact of using actors to support student learning related to comprehensive perinatal nursing in the postpartum period.

Learning Objectives:

- To explore interactions with actors as a means for students to practice nursing roles key to postpartum home visiting
- To describe key areas for learning in examples of student/actor/faculty interactions from simulated home visits
- To discuss participant experiences with simulations using actors and identify key strategies r/t perinatal nursing

Presenters: Faith Wight Moffatt, Maureen White and Catherine Sheffer, Dalhousie University, Halifax NS

Creating a promising future for lifelong health: A prenatal knowledge mobilization project

Tamara Neufeld RN, BN; Mia Elfenbaum BA, MSc; Jane Bertrand BA, MEd; Janet Jamieson BA, MA; Patricia Gregory RN, PhD

Purpose: The purpose of this presentation is to demonstrate an innovative online multimedia resource to make evidence more accessible to educators, students, and practitioners.

Learning Objectives:

- Appreciate how a collaborative interdisciplinary partnership between early child development professionals and nurses can enhance access to current evidence on the impact of early environments on fetal development
- Explore emerging areas of science such as gene by environment interactions in the preconception and prenatal periods
- Describe how an online multimedia resource can be used in nursing education and professional development

Presenters: Tamara Neufeld and Patricia Gregory, Red River College, Winnipeg MB

Celebrating the oldest perinatal database in North America: Future-proofing through innovative data usage

Rebecca Attenborough RN, MN; Leanne Lauzon RN, MSc, PNC(C); Annette Elliott Rose RN, MN, PhD(c); Cynthia Mann RN, MN; Kristina Whiffen BA; John Fahey M. Math.

Purpose: Those who lead perinatal policy, practice and planning in Nova Scotia are increasingly reliant on credible data sources to inform their work. This presentation will highlight two examples of tailored applications using the Nova Scotia Atlee Perinatal Database: the development of key provincial perinatal indicators, and revisions to standardized perinatal health reports.

Learning Objectives:

- To review the history, current use and future plans for the Nova Scotia Atlee Perinatal Database (NSAPD)
- To describe the consultative and deliberative processes undertaken by the Reproductive Care Program (RCP) of Nova Scotia to revise standardized reports and to develop perinatal indicators using the NSAPD
- To discuss how both standardized and tailored data reporting informs perinatal practice, policy, and planning at the provincial and local levels

Presenters: Leanne Lauzon and Annette Elliott Rose, Reproductive Care Program of Nova Scotia, Halifax NS

Session B06 - Innovations **COURVILLE**

The implementation of developmental care: Individual, institutional and national recommendations for implementation

Isabelle Milette MScN, NNP; Marie-Josée Martel MScN, PhD

Purpose: To present national and international recommendations for developmental care implementation as well as example of implementation worldwide. To call for national Canadian guidelines for developmental care implementation in NICU all across the country.

Learning Objectives:

- Improve knowledge on individual, institutional and national recommendations for implementation of developmental care
- Improve knowledge of different available certification in developmental care
- Improve knowledge of different methodologies of implementation in developmental care as well as practical strategies to maximize it

Presenters: Isabelle Milette and Marie-Josée Martel, CHU Sainte-Justine, Montreal QC

Improving the frequency and duration of Kangaroo-Mother Care (KMC) with zero-gravity chairs

Isabelle Milette MScN, NNP; Marie-Josée Martel MScN, PhD; Audrey Larone Juneau MScN; Annie Lacroix MScN, NNP

Purpose: To demonstrate the importance of zero gravity chairs in KMC. We hypothesized that their use would increase both the frequency and duration of KMC episodes in our unit.

Learning Objectives:

- Understand the benefits of zero-gravity chairs for parents and newborns
- Understanding the importance of acquiring zero gravity chairs in NICUs for improvement of frequency and duration of KMC episodes
- Understanding the importance of teaching nurses about KMC and the implication of parents in this process

Presenters: Isabelle Milette and Marie-Josée Martel, CHU Sainte-Justine, Montreal QC

Adoption and surrogacy: Promoting the strength of emerging families

Melanie Basso RN, MSN, PNC(C)

Purpose: The purpose of this presentation is to provide best clinical practices for women and families choosing adoption and surrogacy.

Learning Objectives:

- Understand the care for women who are choosing adoption and of the adoptive families
- Understand the planning required to women who are giving birth to a baby as a surrogate mother
- Participate in a case study of families undergoing surrogate and adoption clinical scenarios

Presenter: Melanie Basso, BC Women's Hospital and Health Centre, Vancouver BC

Session B07 - Perinatal Loss **BEAUMONT/BELAIR**

Effects of an early pregnancy clinic on surgical intervention rates in women with first trimester losses who use English as a second language

Jennifer Bordin RN, MScN

Purpose: An early pregnancy clinic is considered to be the "gold standard" in managing early pregnancy loss as this model of care has been shown to save costs substantially and has led to greater reported patient satisfaction. Despite this, early pregnancy clinics are not standardized in Canada.

Learning Objectives:

- Describe the referral process of the early pregnancy clinic (EPC) at Toronto East General Hospital (TEGH)
- Discuss its operation and how women are using the services provided by the EPC at TEGH
- Describe the results of our research study. A retrospective chart review that investigated the effects of the EPC on surgical intervention rates

Presenter: Jennifer Bordin, Toronto East General Hospital, Toronto ON

Developing an innovative model of care for families experiencing pregnancy subsequent to late fetal loss or neonatal death:

A nurse-led approach

Megan Fockler RN, MPH; Jo Watson PhD, RN(EC), IBCLC; Donna Brown RN(EC), MN

Purpose: Women experiencing pregnancy subsequent to a late fetal loss (> 16 weeks) or neonatal death desire competent and sensitive obstetrical care. This presentation will highlight a one-year pilot project undertaken in a tertiary centre's High Risk Obstetrical Program. It was developed in response to a gap identified by women who had difficulty finding adequate support and resources in pregnancy after a late term loss or neonatal death. The session will describe the process of understanding and addressing the unique needs of this population, and will engage and stimulate participant thinking about possible innovations that can be used in their own settings to best support families by providing comprehensive and seamless care through the childbearing year.

Learning Objectives:

- Identify the unique care needs of women experiencing pregnancy subsequent to late fetal loss or neonatal death
- Describe the process of developing an innovative model of care for families experiencing pregnancy subsequent to a late loss
- Summarize adaptable innovative strategies for implementing woman-centred supports for this population

Presenter: Megan Fockler, Sunnybrook Health Sciences Centre, Toronto ON

Women's long term life experience after pregnancy termination for fetal abnormality

Marilyn Evans RN, PhD; Heba Hassan RN, MScN, PhD

Purpose: This presentation will share women's storied experiences of second trimester pregnancy termination for fetal anomalies and its impact of their lives years later.

Learning Objectives:

- Gain a deeper understanding of perinatal grief and bereavement following second trimester termination of pregnancy for fetal anomalies and the long term impact for women and their families
- Discuss informed consent regarding prenatal screening, diagnostic testing and use of reproductive technologies
- Reflect on current practices regarding prenatal screening, counseling and present models of care related to perinatal grief and bereavement

Presenter: Marilyn Evans, Western University, London ON

11:45-13:00 Dîner, exposants, présentations par affiche / Lunch, exhibitors, poster presentations **KENT/SAINT-LOUIS**

13:00-14:30 Sessions simultanées et Sessions thématiques C

(1^{re} partie) / Concurrent Sessions and Thematic Sessions C (Part 1)

Session C01 (1^{re} partie) - Session thématique - Soins de développement **SAINTE-FOY**

Présentation en français / Presentation in French

Programme de transition à domicile en soins de développement

Marie-Josée Martel inf. Ph.D; Isabelle Milette inf., M.Sc. IPSNN (infirmière praticienne spécialisée en néonatalogie)

But : Cette session thématique en soins de développement s'adresse à toutes les infirmières qui entrent en contact avec les enfants prématurés et leur famille et particulièrement, celles qui exercent dans la communauté et qui sont particulièrement interpellées dans le cadre du suivi postnatal.

Objectifs d'apprentissage :

- Identifier les stades du développement neurologique du fœtus/enfant et interpréter les comportements de l'enfant prématuré et identifier les signes de stress et les signes d'adaptation de ces derniers
- Identifier et utiliser des méthodes de retour au calme afin de maximiser l'organisation et l'autorégulation des enfants prématurés
- Outiller les infirmières en lien avec l'enseignement aux parents lors du retour à la maison

Conférencières : Marie-Josée Martel et Isabelle Milette, Université du Québec à Trois-Rivières, Trois-Rivières QC

Session C02 (part 1) - Thematic Session - Obstetrical Nursing Education **BEAUPORT**

Obstetrical high acuity nursing curriculum - British Columbia Women's Hospital nursing educational program

Isabelle Baribeau MN, BSc, BA; Isabelle Pike BSN; Laura Folino BSN

Purpose: This innovative educational program was developed to address the learning needs of experienced nurses caring for women experiencing complication during the perinatal period. This program involves 3 levels: Level 1 - Oxygen Supply and Demand Framework during the perinatal period. Level 2 - Obstetrical complex care. Level 3 - Medically Complex care.

Learning Objectives:

- Explain the needs for obstetrical nurses to develop the competencies required to care for obstetrically and medically complex patients
- Describe the guiding principle of the Oxygen Supply and Demand Framework during the perinatal period
- Apply the oxygen supply and demand framework to the care of women experiencing obstetrical and medical complications

Presenters: Isabelle Baribeau and Karen Pike, British Columbia Women's Hospital, Vancouver BC

Session C03 (part 1) - Thematic Session - Kangaroo Care **BEAUMONT/BELAIR**

Hold me tender: Enhancing Kangaroo Care in the NICU

Luisa King RN, IBCLC; Beth Nolson RN, IBCLC

Purpose: This interactive presentation will examine the benefits of Kangaroo Care (skin-to-skin) for preterm infants and their parents and will review barriers to its implementation. Strategies to achieve increased and consistent Kangaroo Care within the NICU and beyond will be explored.

Learning Objectives:

- State the impact of Kangaroo Care on both the preterm and parent, including growth, neurodevelopment, attachment, stress reduction and parenting experience
- Demonstrate strategies and practical approaches to providing skin-to-skin
- Explore ways to enhance the practice of skin-to-skin within the NICU, and together create action plans for implementation

Presenters: Luisa King and Beth Nolson, Sunnybrook Health Sciences Centre, Toronto ON

Session C04 - Symposium - Innovations **PORTNEUF**

Présentation en français / Presentation in French

La rétroaction vidéo pour soutenir le développement de la sensibilité maternelle : une pratique exemplaire

Linda Bell Ph.D.; Yves Lajoie pédopsychiatre et professeur; Guadalupe Puentes-Neuman Ph.D.; Andrée Fontaine M.Sc.

But : Introduire les participantes à l'approche rétroaction vidéo dans une perspective de soutien à l'établissement de la relation mère-enfant

Objectifs d'apprentissage :

- Évaluer la qualité des interactions mère-enfant en utilisant un modèle de la relation mère-enfant basé sur la sensibilité maternelle
- Introduire à la réalisation d'une bande vidéo dans la perspective de l'utiliser pour soutenir l'établissement de la relation mère-enfant
- Introduire à la formulation d'une rétroaction à la mère basée sur l'évaluation de la qualité des interactions mère-enfant

Conférenciers : Linda Bell, Yves Lajoie et Guadalupe Puentes-Neuman, Université de Sherbrooke, Sherbrooke QC et Andrée Fontaine, CSSS-IUGS, Sherbrooke QC

Session C05 - Symposium - Fatherhood **MONTMORENCY**

From needs analysis to implementation and evaluation of the Fathers Friendly Initiative within the Family

Francine de Montigny PhD; Christine Gervais PhD; Pascale de Montigny Gauthier MA; Diane Dubeau PhD; Carl Lacharité PhD

Purpose: To present the steps that led to the development of the Fathers Friendly Initiative within the Family (FFIF) from needs analysis to the implementation and evaluation of the program within three regions of Quebec.

Learning Objectives:

- Identify fathers' needs in the perinatal period
- Provide the necessary tools to nurses working with fathers and their families so they can develop and structure intervention programs
- Describe the implementation of FFIF, its evaluation strategies and results of the evaluation its implementation

Presenters: Francine de Montigny and Christine Gervais, Université du Québec en Outaouais, Gatineau QC

Session C06 - Symposium - Innovations **DUFFERIN**

Reducing inequities in use of prenatal care in Winnipeg Health Region: Implementation and evaluation of the Partners in Inner-city Integrated Prenatal Care (PIIPC) project

Maureen Heaman RN, PhD; Patricia Gregory RN, PhD; Lisa Merrill RN, MN; Zorina Marzan Chang RN, MN; Lynda Tjaden RN, MBA

Purpose: The purpose of this symposium is to describe the development,

implementation and evaluation of an innovation to reduce inequities in access to and use of prenatal care by inner-city women in Winnipeg, known as the Partners in Inner-city Integrated Prenatal Care (PIIPC) project.

Learning Objectives:

- Describe the background to the issue of regional variation in rates of inadequate prenatal care, and motivation for the innovative health system improvements to reduce inequities in use of prenatal care by inner-city women
- Describe the process of developing, implementing and evaluating the PIIPC project
- Discuss the implications for nursing practice and future research

Presenters: Maureen Heaman, Pat Gregory, Lisa Merrill and Zorina Marzan Chang, University of Manitoba, Winnipeg MB

14:30-14:45 Pause / Break **GRANDE PLACE**

14:45-16:15 Sessions simultanées et Sessions thématiques C (2^e partie) / Concurrent Sessions and Thematic Sessions C (Part 2)

Session C01 (2^e partie) - Session thématique - Soins de développement **SAINTE-FOY**

Présentation en français / Presentation in French

Programme de transition à domicile en soins de développement

Marie-Josée Martel inf. Ph.D.; Isabelle Milette inf., M. Sc. IPSNN (infirmière praticienne spécialisée en néonatalogie)

But : Cette session thématique en soins de développement s'adresse à toutes les infirmières qui entrent en contact avec les enfants prématurés et leur famille et particulièrement, celles qui exercent dans la communauté et qui sont particulièrement interpellées dans le cadre du suivi postnatal.

Objectifs d'apprentissage :

- Identifier les stades du développement neurologique du fœtus/enfant et interpréter les comportements de l'enfant prématuré et identifier les signes de stress et les signes d'adaptation de ces derniers
- Identifier et utiliser des méthodes de retour au calme afin de maximiser l'organisation et l'autorégulation des enfants prématurés
- Outiller les infirmières en lien avec l'enseignement aux parents lors du retour à la maison

Conférencières : Marie-Josée Martel et Isabelle Milette, Université du Québec à Trois-Rivières, Trois-Rivières QC

Session C02 (part 2) - Thematic Session - Obstetrical Nursing Education **BEAUPORT**

Obstetrical high acuity nursing curriculum - British Columbia Women's Hospital nursing educational program

Isabelle Baribeau MN, BSc, BA; Isabelle Pike BSN; Laura Folino BSN

Purpose: This innovative educational program was developed to address the learning needs of experienced nurses caring for women experiencing complication during the perinatal period. This program involves 3 levels: Level 1 - Oxygen Supply and Demand Framework during the perinatal period. Level 2 - Obstetrical complex care. Level 3 - Medically Complex care.

Learning Objectives:

- Explain the needs for obstetrical nurses to develop the competencies required to care for obstetrically and medically complex patients
- Describe the guiding principle of the Oxygen Supply and Demand Framework during the perinatal period
- Apply the oxygen supply and demand framework to the care of women experiencing obstetrical and medical complications

Presenters: Isabelle Baribeau and Karen Pike, British Columbia Women's Hospital, Vancouver BC

.....
Session C03 (part 2) - Thematic Session - Kangaroo Care

BEAUMONT/BELAIR
.....

Hold me tender: Enhancing Kangaroo Care in the NICU

Luisa King RN, IBCLC; Beth Nolson RN, IBCLC

Purpose: This interactive presentation will examine the benefits of Kangaroo Care (skin-to-skin) for preterm infants and their parents and will review barriers to its implementation. Strategies to achieve increased and consistent Kangaroo Care within the NICU and beyond will be explored.

Learning Objectives:

- State the impact of Kangaroo Care on both the preterm and parent, including growth, neurodevelopment, attachment, stress reduction and parenting experience
- Demonstrate strategies and practical approaches to providing skin-to-skin
- Explore ways to enhance the practice of skin-to-skin within the NICU, and together create action plans for implementation

Presenters: Luisa King and Beth Nolson, Sunnybrook Health Sciences Centre, Toronto ON

.....
Session C07 - Symposium - Innovations **DUFFERIN**

Présentation bilingue / Bilingual Presentation
.....

Development, implementation and impact of the Obstetrical Triage Acuity Scale (OTAS)

Sonia Semenic RN, PhD; Nancy Watts RN, MN, PNC(C); Amélie Guay RN, MScN

Purpose: This 3-part bilingual symposium aims to: 1) Describe the key role of nurses in developing, testing and refining Canada's Obstetrical Triage Acuity Scale (OTAS); 2) Review the steps taken by a large, high-risk obstetrical centre to integrate the OTAS into practice (from tool selection, staff education, practice change and evaluation); and 3) Discuss the impact of implementing the OTAS on patient, provider and health services outcomes.

Learning Objectives:

- Review the development of the Obstetrical Triage Acuity Scale (OTAS) and the on-going work of the OTAS national working group
- Describe a nursing-led, knowledge-to-action process of implementing the OTAS in a large, high-risk maternity centre
- Discuss the impact of implementing the OTAS on OB nurse triage decision-making and patient flow outcomes

Presenters: Nancy Watts, Mount Sinai Hospital, Toronto ON; Amélie Guay, McGill University Health Centre, Montreal QC; and Sonia Semenic, Ingram School of Nursing, McGill University, Montreal QC

.....
Session C08 - Symposium - Fatherhood **MONTMORENCY**

Pathways to facilitating father involvement: Social support and beliefs held by fathers and mothers

Mylène Ross-Plourde B.A., Doctoral candidate; Tamarha Pierce Ph.D.; Francine de Montigny R.N., Ph.D.; Malika Morisset Bonapace B.A., Doctoral candidate; Carl Lacharité Ph.D.; Diane Dubeau Ph.D.; Annie Devault Ph.D.

Purpose: Each of the three presentations report findings empirical research conducted with expectant parents or parents of infants. Presentations examine processes which may account for fathers' prenatal intentions, adjustment and involvement in childcare. Fathers' beliefs and perceptions, mothers' beliefs and motivations, social support and infant feeding modality are considered. Presentations aim to identify paths through which perinatal nurses may support father involvement and the well-being of families with infants.

Learning Objectives:

- Apply well established theoretical concepts to the understanding of father involvement
- Explain the processes through which various cognitive, interpersonal and contextual factors may account for fathers' parental intentions, postnatal experience and involvement
- Identify avenues through which perinatal nurses can promote fathers' involvement and well-being

Presenters: Mylène Ross-Plourde, Malika Morisset Bonapace and Tamarha Pierce, Laval University, Quebec City QC

.....
Session C09 - Symposium - Innovations **COURVILLE**

Informal milk sharing: Practice resource tool kit for health care providers

Lani Wittmann RN, BSN, MN, IBCLC; Meggie Ross RN, BSN, MN, IBCLC; Lea Geiger RN, BScN, IBCLC; Frances Jones RN, MSN, IBCLC; Scott Swati RD, IBCLC; Ingrid Tilstra, IBCLC

Purpose: To share a practice resource tool kit developed for health care providers on the use of unpasteurized donor human milk, based on the principles of patient-centred care, informed shared decision making, and harm reduction.

Learning Objectives:

- Explore personal values and beliefs surrounding the phenomena of informal milk sharing
- Identify the guiding principles informing discussions on infant feeding options
- Discuss the use of decision support tools created to assist the health care provider on the use of unpasteurized donor human milk

Presenters: Lani Wittmann, Perinatal Services BC, Vancouver BC, Frances Jones, BC Women's Hospital, Vancouver BC, Meggie Ross, Interior Health, Penticton BC and Lea Geiger, Interior Health, Kamloops BC

.....
Session C10 - Symposium - Education **PORTNEUF**

Writing good test questions can be challenging

Lisa Keenan-Lindsay RN, MN, PNC(C), LCCE

Purpose: Writing good test questions that assess for analysis and critical thinking can be difficult. Attendees will learn rules and tips to enhance the level of multiple choice and alternate format test questions and apply this knowledge during the presentation to work on their own test questions. Participants are encouraged to bring questions that they would like to work on during the presentation.

Learning Objectives:

- To identify rules for writing multiple choice and alternate format questions
- To discuss how to enhance level of analysis and application in test questions
- To apply information in item writing scenarios

Presenter: Lisa Keenan-Lindsay, Seneca College, Oakville ON

16:30 – 17:30 Rencontres spéciales de réseautage / Special Networking Meetings

Le comité de programmation a planifié des rencontres spéciales pour faciliter les occasions de réseautage entre les délégués. Amorcez de nouveaux contacts avec vos homologues de partout au pays et discutez de sujets communs, partagez des idées et forgez de nouvelles amitiés! Bienvenue à tous, choisissez parmi les options de discussion suivantes :

The Conference Planning Committee has organized special meetings to promote networking opportunities among conference participants. Connect with colleagues from across the country who play a similar role as you to discuss common areas of interest, share ideas and build new friendships! All are welcome to participate, and you can choose any of the following options:

- Session N01** - Infirmières de chevet / Hospital Staff Nurses
SAINTE-FOY
- Session N02** - Santé publique et communautaire / Community and Public Health **PORTNEUF**
- Session N03** - Infirmières de pratique avancée, éducatrices / Clinical Educators and Advanced Practice Nurses
COURVILLE
- Session N04** - Gestionnaires et directrices / Managers and Directors
MONTMORENCY
- Session N05** - Professeures de niveau collégial et universitaire / University and College Professors **BEAUPORT**
- Session N06** - Chercheurs / Researchers **BEAUMONT/BELAIR**

18:00 Réception / Reception

18:30 Souper et spectacle / Dinner and show **PALAIS**

« Marguerites et saphirs » avec La famille Painchaud / “Daisies and Sapphires” featuring The Painchaud Family



Jour 3 - Samedi le 7 novembre / Day 3 - Saturday, November 7th

- 07:00-07:45 Trotte des Toonies, marche historique ou séance de Zumba / Toonie Trot or historical walk **LOBBY**
Zumba **PALAIS**
- 07:45-08:30 Déjeuner et rencontres régionales / Breakfast and Regional Meetings **PALAIS**
Rejoignez votre directrice régionale pour une rencontre informelle pour faire plus ample connaissance en agréable compagnie au petit déjeuner / Join your Regional Director for an informal meet & greet and discussion during breakfast.

08:30-08:45 Allocutions d'ouverture / Opening Remarks PALAIS

08:45-10:45 Sessions simultanées D / Concurrent Sessions D

Session D01 - Allaitement/Relation mère-enfant **SAINTE-FOY** *Présentations en français / Presentations in French*

Étude descriptive de la sensibilité maternelle selon la poursuite de l'allaitement maternel

Marie-Estelle Couture M.Sc.; Marie Lacombe Ph.D.; Linda Bell Ph.D.

But : Le but de cette présentation est de permettre une familiarisation avec le concept de sensibilité maternelle en contexte d'allaitement maternel.

Objectifs d'apprentissage :

- Se familiariser avec le concept de sensibilité maternelle
- Connaître l'impact de la sensibilité maternelle sur la poursuite de l'allaitement
- Discuter des recommandations pour la pratique

Conférencière : Marie-Estelle Couture, CHU de Québec, Québec QC

L'expression de lait maternel au chevet du nouveau-né prématuré - Un projet pilote

Marjolaine Héon inf., Ph.D.; Linda Bell inf., Ph.D.; Renée Flacking inf., Ph.D.

But : Le but de cette présentation est de partager les résultats préliminaires d'un projet pilote qui vise à évaluer l'acceptabilité et explorer l'expérience de mères quant à l'expression de lait maternel au chevet de leur nouveau-né prématuré.

Objectifs d'apprentissage :

- Apprécier l'état actuel des connaissances actuel quant à l'expression de lait maternel au chevet du nouveau-né prématuré
- Décrire l'expérience de mères quant à l'expression de lait maternel au chevet de leur nouveau-né prématuré
- Décrire l'acceptabilité de l'expression de lait maternel au chevet du nouveau-né prématuré

Conférencière : Marjolaine Héon, Université de Montréal, Montréal QC

Intervention éducative auprès d'infirmières: L'amélioration du contact peau à peau en post-partum immédiat grâce à l'utilisation des résultats probants

Jeanne Pigeon Turenne infirmière clinicienne, M.Sc.; Marjolaine Héon inf., Ph.D.; Marilyn Aita inf., Ph.D.; Joanne Faessler infirmière clinicienne, IBCLC; Chantal Doddridge inf., M.Sc.

But : Présenter les résultats d'un stage de maîtrise ayant pour but de développer et mettre à l'essai une intervention éducative avec et pour des infirmières visant l'amélioration de la pratique du contact peau à peau en post-partum immédiat.

Objectifs d'apprentissage :

- Connaître les bienfaits du contact peau à peau pour le nouveau-né ainsi que pour la mère en post-partum immédiat
- Apprécier les retombées d'une intervention éducative auprès d'infirmières sur la pratique du contact peau à peau en post-partum immédiat
- Identifier au moins une intervention infirmière qui peut être réalisée afin que la pratique du contact peau à peau en post-partum immédiat soit davantage basée sur les résultats probants

Conférencière : Jeanne Pigeon Turenne, Faculté des sciences infirmières de l'Université de Montréal, Montréal QC

Session D02 - Risk Management **BEAUMONT/BELAIR**

The implementation of an innovative obstetrical falls risk assessment tool

Leigh Andrews RN, MN, PNC(C); Gillian Ballantyne RN, BScN, PNC(C)

Purpose: To develop an innovative obstetrical falls risk assessment tool that would span the continuum of care, from initial visit to postpartum discharge in a tertiary setting.

Learning Objectives:

- Describe our innovative obstetrical falls risk assessment tool
- Reflect on your existing practice for pregnant women at risk for falls
- Outline the benefits of implementing this tool within your setting

Presenters: Leigh Andrews and Gillian Ballantyne, Sunnybrook Health Sciences Centre, Toronto ON

Management of postpartum urinary retention

Michelle O'Connor MN, RN, PNC(C); Sue Hermann MN, RN, IBCLC, PNC(C); Janet Bodley MD, MEd, FRCSC; Martha Hohenadel RN

Purpose: The purpose of this presentation is to share an innovative practice to identify, prevent and manage postpartum urinary retention (PUR). A quality improvement framework and the principles of change management will be utilized throughout this presentation.

Learning Objectives:

- Identify the risk factors for developing PUR
- Describe an innovative standard of care for identifying, preventing and managing PUR in the early postpartum period
- Describe the principles of change management that were used to implement this innovative practice

Presenters: Michelle O'Connor, Sue Hermann and Martha Hohenadel, Sunnybrook Health Sciences Centre, Toronto ON

Since H1N1, where are we, and where are we headed: Lessons learned after caring for flu-positive mothers on the postpartum unit during season 2014-2015

Ginette Aucoin RN, MScA, IBCLC; Victoria Bizgu MD, FRCPC; Marie-Josée Bourassa RN, BScN; Rivky Porgesz Farkas, community member on interprofessional breastfeeding committee

Purpose: Based on the lessons learned by an interdisciplinary postpartum team during the flu season of 2014-2015, we will build a case for an impetus for change, aiming for evidence informed practices that will promote maternal and infant health outcomes, as well as protect and support breastfeeding.

Learning Objectives:

- To review the care of three women who presented to the Family Birthing Centre of a tertiary care, university-affiliated hospital in labour with flu-like symptoms
- To describe the challenges experienced during the flu season 2014-2015 in the obstetric service area of a tertiary care, university-affiliated health centre
- To discuss potential recommendations for future flu seasons

Presenter: Ginette Aucoin, Jewish General Hospital, Montreal QC

Session D03 - New Trends: Immediate Postpartum **BEAUPORT**

Skin-to-skin contact in the operating room: What do labour and delivery Registered Nurses think?

Magdalena Dobosiewicz BScN, RN, MA(c); Lynn Rempel

Purpose: The purpose of this presentation is to explore Registered Nurses' perceptions about facilitators and barriers that have enabled or hindered the practice of maternal skin-to-skin contact (MSSC) in the operating room (OR). The presentation will also explore potential strategies to increase the practice of MSSC in the OR.

Learning Objectives:

- Provide an understanding of Registered Nurses' attitude, subjective norm, and perceived behavioral control about MSSC in the OR
- Outline Registered Nurses' perceptions about facilitators and barriers to practice and how they affect their past behavior and intention to practice the behavior
- Provide suggested recommendations based on the results obtained from this study, literature reviewed, and personal experiences to enhance the practice of MSSC in the OR

Presenter: Magdalena Dobosiewicz, St. Catharines Site Hospital - Niagara Health System, St. Catharines ON

Keeping moms and babies together: A new labor and delivery recovery room and skin-to-skin after c-section

Kimani Daniel RN, MSc(A), IBCLC, PNC(c); Nathalie Villemure RN; Rosemarie Hardan RN; Irene Sarasua RN, MSc(A), IBCLC, PNC(c)

Purpose: This presentation will describe the process of creating a dedicated recovery room on a labor and delivery unit for post-cesarean care and depict the improvement in opportunities for immediate skin-to-skin for mothers and newborns post-cesarean.

Learning Objectives:

- Describe the process of creating a dedicated recovery room for a labor and delivery unit
- Describe the benefits for the mother-baby dyad and family as a result of this innovation

- Describe facilitators, challenges and lessons learned in the process

Presenter: Kimani Daniel, Jewish General Hospital, Montreal QC

How the postpartum environment enables or hinders attainment of mothers' and fathers' goals

Jenny Gaboury RN, MSc(A) Nursing; Shalisa Capaday MSc(A) Nursing; Margaret Purden RN, PhD; Jennifer Somera RN, MSc(A) Nursing

Purpose: To describe the ways in which the postpartum hospital environment enables or hinders the attainment of mothers' and fathers' goals in the immediate postpartum period.

Learning Objectives:

- To appreciate the goals mothers and fathers seek to accomplish during their postpartum hospital stay
- To understand how the postpartum environment enables and hinders mothers' and fathers' goals
- To recognize the importance of attending to and aligning the various dimensions of the postpartum environment (human, procedural and physical) with the organizational philosophy regarding delivery of care such as baby friendly and a family centered approach

Presenter: Jenny Gaboury, McGill University, Montreal QC

Session D04 - Breastfeeding **COURVILLE**

The influence of the childbirth process on breastfeeding outcomes in Prince Edward Island

Janet Bryanton RN, PhD, PNC; Rosemary Drake BN, RN, IBCLC; Donna Walsh BN, RN, IBCLC; Kathy Larter RN; Patrice Drake RN, MN; William Montelpare PhD; Shauna Chisholm BN, RN, MBA

Purpose: This pilot study examined the influence of modifiable factors related to the childbirth process on breastfeeding initiation, as well as duration and exclusivity up to 6 months postpartum.

Learning Objectives:

- To review key features of Baby Friendly and Mother Friendly initiatives in relation to current study
- To examine the effect of factors related to the childbirth process on the initiation of breastfeeding
- To examine the effect of factors related to the childbirth process on the duration and exclusivity of breastfeeding

Presenter: Janet Bryanton, University of Prince Edward Island, Charlottetown PE

Promoting an evidence-based transition of preterm infants from gavage to direct breastfeeding: A pilot nursing educational intervention

Mona Ziadi RN, BSc; Marjolaine Héon RN, PhD; Marilyn Aita RN, PhD; Lyne Charbonneau RN, MSc

Purpose: To present the development, the assessment, as well as the impact of a pilot nursing educational intervention, based on the Iowa Model for Evidence-Based Practice.

Learning Objectives:

- Describe the steps involved in the development of a pilot educational intervention based on the Iowa Model for Evidence-Based Practice
- Examine the impact of the pilot nursing educational intervention on nurses' practice, beliefs and knowledge
- Review recommendations for nursing practice and research, based on the pilot nursing educational intervention's results

Presenter: Mona Ziadi, University of Montreal, Montreal QC

Beyond the latch: A new approach to breastfeeding support

Betty Ann Robinson RN, MN, IBCLC; Gweneth Doane RN, PhD

Purpose: The purpose of this presentation is to introduce a new strengths-based, relational approach to breastfeeding support and provide practical strategies for use in everyday nursing practice for nurses working directly with breastfeeding women.

Learning Objectives:

- Expand nurses' foci beyond an instrumental approach to also incorporate a relational approach when working with breastfeeding women
- Understand a relational approach to breastfeeding support within the changing health system context
- Understand relational strategies nurses can use to build upon the strengths of women and their families to optimize opportunities for women to achieve their breastfeeding goals

Presenter: Betty Ann Robinson, Reproductive Care Program of Nova Scotia and Nova Scotia Department of Health and Wellness, Halifax NS

Session D05 - Leadership *MONTMORENCY*

Effective strategies to support populations with lower rates of breastfeeding

Hiltrud Dawson RN, BTEch, IBCLC

Purpose: To inform participants of the results confirming effective strategies to improved breastfeeding rates from 15 community projects and take a look at the future by examining the progress of 46 new breastfeeding community projects.

Learning Objectives:

- Learn about evidence-informed effective strategies to improve breastfeeding rates
- Understand how 15 breastfeeding community projects used evidence-informed effective strategies and applied them to populations with lower rates of breastfeeding
- Compare the results from the completed projects to the literature, the second round of projects and participants' own communities

Presenter: Hiltrud Dawson, Health Nexus, Toronto ON

Growing a Baby-Friendly Ontario: How do we monitor the impact of change?

Linda Young MScN, EdD, CHE; Kristina Niedra MA

Purpose: The purpose of this presentation is to discuss strategies for monitoring and evaluating complex change at several levels, within the context of the Baby-Friendly Initiative for Ontario. More specifically, the presentation will provide an overview of the goals, tools, and outcome measures for the BFI evaluation strategy for the provincial initiative. It will also provide lessons learned and reflections on the challenges of establishing a sustainable model for tracking complex change over time.

Learning Objectives:

- Describe the process used to develop an evaluation and monitoring strategy for the Baby-Friendly Initiative Strategy for Ontario
- Discuss components, tools and levels of monitoring and evaluation for the change and how to discern these
- Describe progress to date, lessons learned and future plans regarding the evaluation and monitoring strategy for the BFI in Ontario

Presenters: Linda Young and Kristina Niedra, Toronto East General Hospital, Toronto ON

Breastfeeding Friendly Hospital Initiative: How does it apply in the high risk BC Women's antepartum patient?

Lorin Veltkamp RN BSN MPH; Jody Nikkinen BSN; Laura Folino BSN

Purpose: To provide client centred breastfeeding education to women in the antepartum setting, as per BFI guidelines, when the outcome of the pregnancy is uncertain or complicated by risk.

Learning Objectives:

- Outline the breastfeeding learning needs of a high risk antepartum patient
- Outline the steps required to facilitate nursing implementation of sensitive and appropriate education for women experiencing high risk pregnancy
- Evaluate the uptake and effectiveness of strategies to increase education in this high risk area of practice

Presenters: Lorin Veltkamp and Jody Nikkinen, British Columbia Women's Hospital, Vancouver BC

Session D06 - Professional Practices *PORTNEUF*

Centering women and newborns in Health Human Resources (HHR) planning: Using a needs-based approach to transform the future of primary maternity health care in Nova Scotia

Annette Elliott Rose RN, MN, PhD(c); Gail Tomblin Murphy RN, PhD

Purpose: The purpose of this presentation is to provide an overview of a sequential quantitative-qualitative mixed methods study aimed at identifying the primary maternity care needs of women and newborns in Nova Scotia.

Learning Objectives:

- To provide an overview of the theory, design and methods from a mixed methods study on needs-based health human resources in primary maternity health care
- To discuss in detail the integrated findings from the quantitative and qualitative phases of the research
- To describe the policy, practice and planning implications of the research, including specific implications for perinatal nursing care

Presenter: Annette Elliott Rose, Reproductive Care Program of Nova Scotia, Halifax NS

The innovative establishment of a dedicated Family Care Nurse (FCN)

Amanda Burton RN, BN, PNC(C); Leah Thorp RN, BScN, PNC(C); Glenys Weisshaar RN, BScN, PNC(C); Christina Santo RN, BScN

Purpose: The purpose of this presentation is to identify an effective strategy to assist families in identifying their strengths and needs while giving birth in a tertiary care hospital. The use of a designated Family Care Nurse (FCN) assists with a reinvestment of family centred care practices, ensuring the needs of the family are met and they are assisted to adapt to their new roles in a positive way.

Learning Objectives:

- Assist learners to identify the importance of innovative strategies related to a reinvestment in family centred care
- Assist learners in identifying evaluative components to ensure a pilot project can become a permanent concept for improved health care
- Provide learners with an additional concept/idea to assist health regions with conceptualization of family centred care and provide the future goals of the program within one region

Presenter: Leah Thorp, Regina Qu'Appelle Health Region, Regina SK

Maternal substance use and Neonatal Abstinence Syndrome: A descriptive study

Karen McQueen PhD; Lindsay Desaulniers MPH; Jodie Murphy-Oikonen PhD

Purpose: The purpose of this study was to evaluate the prevalence of NAS and types of substance use during pregnancy, and determine whether the presentation of NAS symptoms differ based on the type of substance.

Learning Objectives:

- Discuss the prevalence of neonatal abstinence syndrome and types of substances used during pregnancy
- Identify whether the presentation of neonatal abstinence syndrome symptoms differ based on substance exposure
- Promote the development of evidence based interventions for infant with neonatal abstinence syndrome

Presenter: Karen McQueen, Lakehead University, Thunder Bay ON

.....

Session D07 - Mental Health **DUFFERIN**

.....

Mental health screening in pregnancy: What methods do women prefer and what are the barriers and facilitators to disclosure?

Dawn Kingston RN, PhD; Marie-Paule Austin MD; Maureen Heaman RN, PhD; Sheila McDonald PhD; Gerri Lasiuk RN, PhD; Wendy Sword RN, PhD; Anne Biringer MD

Purpose: To describe pregnant women's views of mental health screening including screening methods, personal and system-related barriers and facilitators that influence their responses to provider-initiated mental health screening.

Learning Objectives:

- To describe pregnant women's preferences for methods of mental health screening
- To describe barriers and facilitators that impact prenatal mental health screening
- Based on these findings, define strategies for optimizing prenatal mental health screening

Presenters: Maureen Heaman, University of Manitoba, Winnipeg MB and Wendy Sword, University of Ottawa, Ottawa ON

.....

A comparison of pregnancy mental health outcomes across 7 ethnicities

Alexandra Robinson MSc, PhD student; Karen Benzies RN, PhD

Purpose: The aim of this study was to identify specific types of psychosocial stressors experienced by Canadian women who identified with an ethnic minority. Specifically, when compared to women of dominant culture (White), do women who identify with an ethnic minority (Asian, Arab, Other Asian, African, First Nations and Latin American) experience greater levels of psychosocial stress during pregnancy?

Learning Objectives:

- Increase awareness as to which Canadian sub-populations may be at greatest risk for poor pregnancy mental health outcomes
- Highlight the importance of perinatal care providers to screen for depression and anxiety with marginalized populations
- Consider barriers to perinatal care amongst immigrant populations

Presenter: Alexandra Robinson, University of Calgary, Calgary AB

.....

Influence of adverse life experiences on perinatal depression among young mothers

Kira Friesen RN, BN; Wendy Peterson RN, PhD; Janet Squires PhD; Cathryn Fortier MScN

Purpose: The purpose of this study was to gain a better understanding of the prevalence of perinatal depression and adverse life events, as well as, determine which adverse life events predict perinatal depression among young childbearing women who access specialized services in an urban centre in Canada.

Learning Objectives:

- To describe the prevalence of (1) poor social support, substance use, and trauma (childhood trauma and intimate partner violence), and (2) depressive symptoms in a sample of young Canadian childbearing women ages 14-24 years
- To describe how poor social support, substance use, and trauma (childhood trauma and intimate partner violence) are associated with the presence of depressive symptoms in this sample of young mothers
- To discuss the implications of the study findings for perinatal nursing practice.

Presenter: Kira Friesen, University of Ottawa, Ottawa ON

.....

10:45-11:00 Pause / Break **GRANDE PLACE**

11:00-12:00 **Conférence principale / Keynote Presentation PALAIS**
Présentation en français avec traduction simultanée / Presentation in French with simultaneous interpretation into English

Influence de l'environnement sur la santé humaine

« Perturbateurs endocriniens et santé des femmes : l'exemple des phtalates »



Après avoir défini ce qu'est un perturbateur endocrinien, la conférencière passera en revue les connaissances actuelles sur l'impact d'une classe particulière de plastifiants que sont les phtalates sur la santé des femmes.

Objectifs d'apprentissage : À l'issue de la conférence, le/la participant(e) sera capable de :

- Définir ce qu'est un perturbateur endocrinien
- Citer les principaux impacts connus à ce jour des phtalates sur la santé des femmes
- Conseiller une patiente pour limiter son exposition aux phtalates

Conférencière : Patricia Monnier M.D., Ph.D., Obstétricienne-gynécologue et spécialiste de la fertilité, Université McGill, Montréal QC

Dre Patricia Monnier est arrivée à Montréal en 2006 en provenance de Nancy en France où elle était professeure titulaire en Médecine de la Reproduction depuis 1998. Elle est aussi détentrice d'un PhD en biologie cellulaire et immunologie. Elle travaille actuellement à l'Université McGill. Un de ses intérêts en clinique est la prise en charge de la défaillance ovarienne prématurée. Ses intérêts de recherche actuels sont focalisés sur l'impact de l'environnement sur la santé reproductive de l'adulte et sur le développement de l'enfant.

Impact of the environment on human health

“Disruptors of endocrine function and women's health: the case of phtalates”

After defining disruptors of endocrine function, the speaker will present a review of current knowledge regarding the impact of particular types of plasticizers that are phtalates on women's health.

Learning objectives: At the end of the presentation, the participant will be able to:

- Describe the concept of disruptor of endocrine function.
- Name the main impacts of phtalates on women's health known to date
- Counsel women on how to minimize their exposure to phtalates

Presenter: Patricia Monnier MD, PhD, Obstetrician Gynecologist and Fertility Specialist, McGill University, Montreal QC

Dr. Patricia Monnier came to Montreal from the University of Nancy in France, where she served as a professor in Reproductive medicine from 1998 to 2006. Also, she holds a PhD in cell biology and immunology. Upon her arrival in Canada, she joined the Université de Montréal as a Visiting Professor in the Department of Obstetrics and Gynecology and was appointed Full Clinical Professor in November 2008. She has participated in major grants funded by the Canadian Institutes of Health Research (CIHR), the MSSS and Health Canada. She joined McGill University in September 2010.

12:00-12:30 **Allocution de clôture / Closing Remarks PALAIS**

12:30-13:30 **Dîner boîte à lunch et réseautage / Brown bag lunch and networking PALAIS**



Présentations par affiche / Poster Presentations

P01 *Les infirmières en périnatalité prennent en main leur avenir!*

Cathy Houde inf., M.Sc.; Audrey Larone Juneau inf., M.Sc.

But : Partager comment les infirmières en périnatalité s'investissent pour rehausser leur pratique.

Objectifs d'apprentissage :

- Partager les initiatives des infirmières en périnatalité dans la prise en charge du développement (ou rehaussement) de leur pratique
- Discuter des moyens novateurs pouvant être mis en œuvre par une direction des soins infirmiers qui souhaite adopter un style de gestion participative.
- Illustrer, par différents exemples, des changements concrets qui ont été apportés par les infirmières et qui ont permis le rehaussement de la pratique

Conférencières : Cathy Houde et Audrey Larone Juneau, CHU Ste-Justine, Montreal QC

P02 *PQDNS: stratégie de formation continue pour les professionnelles de la santé œuvrant en centre de naissance*

Sylvie Lefebvre infirmière clinicienne BSc; Yves Giguère Medical Biochemist, MD, PhD, FRCPC; Marie-Thérèse Berthier Clinical Biochemist, PhD, CSPQ, FCACB

But : Favoriser une pratique optimale des prélèvements sanguins sur papier buvard pour le Programme de dépistage néonatal sanguin (PQDNS)

Objectifs d'apprentissage :

- Améliorer la pratique infirmière
- Aider les infirmières à bien informer les parents afin qu'ils prennent une décision libre et éclairée
- Établir une relation de partenariat empreint d'une meilleure compréhension mutuelle

Conférencière : Sylvie Lefebvre, PQDNS, CHU de Québec, Université Laval, Québec QC

P03 *La sexualité des hommes durant la période périnatale*

Viola Polomeno inf., Ph.D.

But : Augmenter les connaissances des infirmières œuvrant en périnatalité concernant la sexualité des hommes durant la transition à la parentalité.

Objectifs d'apprentissage :

- Augmenter les connaissances des infirmières œuvrant en périnatalité concernant la sexualité des hommes durant la période périnatale
- Présenter l'état des connaissances concernant la sexualité des hommes pendant la grossesse, l'intrapartum et la postpartum

Conférencière : Viola Polomeno, Université d'Ottawa École des sciences infirmières, Ottawa ON

P04 *Les besoins de formation des infirmières dans la prise en charge à domicile d'enfants nés prématurément*

Johanie Gagné inf., étudiante à la maîtrise de type cours; Linda Bell Ph.D.; Mireille Fortin; Andrée Fontaine; Johanne Breton; Hélène Beaudry

But : Sonder les besoins de formation des infirmières du secteur Enfance-Jeunesse-Famille (EJF) face au suivi d'enfants nés prématurément.

Objectifs d'apprentissage :

- Améliorer la qualité des soins dans la prise en charge à domicile d'enfants nés prématurément
- Cerner l'expérience des infirmières du secteur EJF lors de la prise en charge à domicile d'enfants nés prématurément
- Identifier des stratégies visant à soutenir les infirmières du secteur EJF lors de la prise en charge à domicile des enfants nés prématurément

Conférencière : Johanie Gagné, Centre Hospitalier Universitaire de Sherbrooke (CHUS), Sherbrooke QC

P05 *Le contrôle de l'éclairage à l'unité néonatale, comment faire?*

Valérie Lebel Candidate au doctorat; Marilyn Aita Ph.D.

But : Présenter les défis, les leçons apprises et les recommandations concernant l'application de l'éclairage cyclique et de l'éclairage tamisé constant auprès de nouveau-nés prématurés.

Objectifs d'apprentissage :

- Comprendre l'importance du contrôle de l'éclairage à l'unité néonatale
- Identifier les méthodes de contrôle de l'éclairage et les interventions à mettre en place
- Connaître le matériel de contrôle de l'éclairage disponible à l'unité néonatale et comment l'utiliser

Conférencière : Valérie Lebel, CHU Ste-Justine, Montréal QC

P06 *L'expérience des femmes ayant utilisé l'autohypnose en intrapartum*

Valérie-Catherine St-Jacques infirmière étudiante à la maîtrise; Marjolaine Héon infirmière Ph.D.

But : Présenter un projet d'étude de cas multiples qui a pour but d'explorer l'expérience de ces femmes qui ont recours à cette méthode pendant le travail et l'accouchement au regard de la prise de décision émancipatoire.

Objectifs d'apprentissage :

- Exposer la méthode d'autohypnose expérimentée par les participantes
- Expliquer les différents thèmes liés à l'expérience de travail et d'accouchement en lien avec l'autohypnose
- Discuter des facteurs pouvant influencer le processus décisionnel émancipatoire des femmes ayant utilisé l'autohypnose en intrapartum

Conférencière : Valérie-Catherine St-Jacques, Université de Montréal, Montréal QC

P07 *Les pratiques collaboratives auprès d'enfants nés prématurément : vers des soins infirmiers de transition exemplaires*

Johanie Gagné inf., étudiante à la maîtrise de type cours; Linda Bell Ph.D.; Mireille Fortin; Andrée Fontaine; Johanne Breton; Hélène Beaudry

But : Présenter les résultats d'une recension systématique des écrits sur les pratiques collaboratives au sein des équipes infirmières œuvrant dans différents établissements de santé et auprès d'enfants nés prématurément.

Objectifs d'apprentissage : À la fin de cette présentation, les participants seront informés d'apprentissage:

- De l'état des connaissances entourant les pratiques collaboratives
- Des conditions déterminantes pour améliorer la collaboration en faveur des soins aux enfants nés prématurément
- Des défis de mise en œuvre des pratiques collaboratives inter-organisationnelles

Conférencière : Johanie Gagné, Centre Hospitalier Universitaire de Sherbrooke (CHUS), Sherbrooke QC

P08 **Acceptabilité des infirmières face à la réduction de la lumière et du bruit lors du contact peau à peau à l'unité néonatale**

Marilyn Aita PhD; Robyn Stremler PhD; Nancy Feeley PhD; Keith Barrington MD; Anne Monique Nuyt MD

But : Le but de cette étude pilote était d'évaluer auprès d'infirmières à l'unité néonatale leur acceptabilité face à la réduction de la lumière et du bruit lors du contact peau à peau et si cela interféraient avec leurs soins.

Objectifs d'apprentissage :

- Identifier la lumière et le bruit comme des éléments qui peuvent influencer les nouveau-nés prématurés et leurs mères lors du contact peau à peau
- Connaître l'acceptabilité des infirmières face à la réduction de la lumière et du bruit lors du contact peau à peau à l'unité néonatale
- Connaître si la réduction de la lumière et du bruit lors du contact peau à peau à l'unité néonatale interfère avec les soins des infirmières

Conférencière : Marilyn Aita, Université de Montréal, Montréal QC

P09 **Using telemedicine to assess and treat women with mastitis in an NP-led breastfeeding clinic**

Jo Watson PhD, RN(EC), IBCLC

Purpose: The purpose of this presentation is to describe a pilot project for an innovative practice, using video communication, to assess women to confirm a diagnosis of mastitis and develop a plan of care.

Learning Objectives:

- Become familiar with the evidence about the effectiveness of telemedicine
- Learn about a pilot program to evaluate the use of telemedicine to assess and treat women with mastitis
- Consider opportunities in your practice to evaluate care delivered using telemedicine technology

Presenter: Jo Watson, Sunnybrook Health Sciences Centre, Toronto ON

P10 **The future of nursing empowerment through scripting: The use of a script to facilitate best practices in formula supplementation of the breastfed infant**

Susan Guest RN, MN, IBCLC, PNC(c); Sylvia Walkowski RN, IBCLC

Purpose: To describe our historical challenges in reducing non-medically indicated formula supplementation of the healthy breastfeeding newborn, and the research project aimed at supporting nurses in their efforts to adhere to best practice recommendations.

Learning Objectives: At the end of this presentation, participants will:

- Understand the various competing demands and expectations on the nurse who is supporting the mother-infant dyad through a clusterfeeding episode, and the challenges in offering nursing care based in best practice guidelines
- Be able to identify at least two strategies that are evidence-based, best practice recommendations which are also interpreted as positive and supportive by the clusterfeeding mother
- Gain an understanding of the value of scripting in empowering the nurse to provide evidence-based nursing care

Presenters: Susan Guest and Sylvia Walkowski, Mount Sinai Hospital, Toronto ON

P11 **Mobile phone based peer support to prevent postpartum depression in adolescent mothers: A pilot randomized controlled trial**

Barbara Chyzy RN, BN, MN, PhD student; Cindy-Lee Dennis RN, PhD; LaRon Nelson RN, PhD; Jennifer Stinson RN, NP, PhD; Simone Vigod MD

Purpose: The purpose of this research study is to create and evaluate a support resource for adolescent mothers in order to inform a potential future full scale trial.

Learning Objectives:

- To provide an overview of current trends in adolescent birth rates and postpartum depression rates in Canada
- To gain an understanding of the 3 components of peer support: informational, emotional and appraisal support
- To discuss the potential of mobile phone technology as a means of providing support to adolescent mothers during pregnancy and the early postpartum period

Presenter: Barbara Chyzy, University of Toronto, Toronto ON

P12 **Under 20: Changing the way we think about early pregnancy loss**

Lisa Bland RN, BScN; Glenda Carson PhD, RN, PNC(C), IBCLC; Lisa Wing RN, BN, ELNEC-PPC

Purpose: Through the highlighted needs of dedicated front line staff, patients, and families, the IWK Health Centre Women's and Newborn Health Program was able to identify a gap in support for women experiencing early pregnancy loss under 20 weeks gestation. An Early Loss/Bereavement Working Group was developed to examine the needs of the population, and patient supports were put into place through this.

Learning Objectives:

- Identify the gaps and celebrations in early pregnancy loss support
- Share the role of front line nurses in bereavement support and follow up
- Exchange ideas and best practice to support early pregnancy loss support through group dialogue

Presenters: Lisa Bland, Glenda Carson and Lisa Wing, IWK Health Centre, Halifax NS

P13 **20/20 Vision: 5 year strategic directions for the IWK Women's and Newborn Health Program**

Michelle LeDrew RN, MN; Glenda Carson PhD, RN, PNC(C), IBCLC; Lisa Bland RN, BScN

Purpose: Through a stakeholder engagement and data gathering analysis the IWK Women's and Newborn Health Program (WNHP) set out to establish clear objectives to enhance and improve health outcomes and create efficiencies in our care delivery system. The intention of this strategic plan is to provide a common focus, clear vision and a mandate inspired by change through the strategic directions with associated specific actions.

Learning Objectives:

- Share the comprehensive information on stakeholder engagement and how data and feedback were compiled and analyzed
- Share the process for establishing the program vision and strategic directives
- Discuss the strategic directives and the importance of promoting patient and family centred care, education and care delivery improvements including an accountability framework

Presenters: Michelle LeDrew, Lisa Bland and Glenda Carson, IWK Health Centre, Halifax NS



P14 **The Baby-Friendly Initiative video for the IWK Health Centre**

Lisa Bland BScN, RN; Janine McClure BScN, RN, IBCLC

Purpose: To share an innovative way for education of all staff on the Baby-Friendly Initiative (BFI) within the IWK Health Centre.

Learning Objectives:

- Understand the 10 Steps of the BFI
- Recognize how the BFI is the foundation for best care maternity practices
- Develop the knowledge that the BFI supports all mothers and children despite feeding method

Presenter: Betty Ann Robinson, Reproductive Care Program of Nova Scotia, Halifax NS

P15 **Enhancing program participation for families experiencing vulnerability: Exploring the Baby-Kit concept**

Meredith Brockway RN, BSc, BN, IBCLC; Karen Benzies RN, PhD; Jennifer Weber PhD

Purpose: To describe the use of the Baby-Kit as an enhancement to existing parenting support programs directed towards families experiencing periods of vulnerability.

Learning Objectives:

- To describe the concept of the Baby-Kit and how it will be used an enhancement to support vulnerable parents participating in Welcome-to-Parenthood Alberta
- To understand the contents of the Baby-Kit and the evidence/reasoning to support inclusion of the contents
- To understand outcome measures for evaluation of the Baby-Kit

Presenter: Meredith Brockway, University of Calgary, Calgary AB

P16 **Play2Sleep: A mixed methods study protocol of using play to improve infant sleep**

Elizabeth M. Keys RN, PhD(c), CCHN(C); Karen M. Benzies PhD, RN

Purpose: To describe an explanatory sequential mixed methods protocol that will be used to determine if Play2Sleep improves infant sleep disturbance (ISD) by enhancing parental ability to respond to their infant's sleep-related social cues.

Learning Objectives:

- To describe a conceptual definition of infant sleep disturbance
- To describe Play2Sleep, an intervention to improve infant sleep disturbances by enhancing parent-infant interactions
- To describe an explanatory sequential mixed methods protocol for the evaluation of Play2Sleep

Presenter: Elizabeth M. Keys, University of Calgary, Calgary AB

P17 **Does an evidence-based information package at birth improve parental awareness and use of community resources?**

Deborah Wasylenko RN; Sarah Horn BA, MCR; Karen Benzies BSc, MN, PhD, RN

Purpose: To evaluate if providing a Welcome to Parenthood kit at birth improves parental awareness and use of community resources.

Learning Objectives:

- To explain the association between health and socio-demographic factors and parental awareness and use of community resources in a group of parents (mothers and fathers) who received standard information at birth

- To compare parental awareness and use of community resources between a group of parents (mothers and fathers) who received an evidence-based information package at birth and a group that did not

- To apply evidence from this study to other perinatal nursing contexts

Presenter: Deborah Wasylenko, University of Calgary, Calgary AB

P18 **Gender differences in perception of pregnancy risk among women with gestational diabetes and their male partners: A mixed methods study**

Suzanne Lydia Lennon BA, RN, BN, PhD(c); Maureen Heaman RN, PhD

Purpose: The purpose of this presentation is to disseminate the preliminary results of this dissertation project to Canadian nursing colleagues.

Learning Objectives:

- To gain an understanding of gender based risk perception in pregnancies complicated by gestational diabetes
- To provide a unique perspective in pregnancy risk perception - that of the male partner
- To develop an understanding of the factors that contribute to either concordant or discordant risk perceptions in couples experiencing diabetes in pregnancy

Presenter: Suzanne Lennon, University of Manitoba, Manitoba MB

P19 **Strengthening prenatal education in Ontario: Using the new key messages to guide your practice**

Matthuschka Sheedy RN, BNSc, ICCE

Purpose: The primary objective of this presentation is to educate nurses about the new provincial Prenatal Education Key Messages developed by the Best Start Resource Centre.

Learning Objectives: Participants will have:

- A clear understanding of the reason why the Ministry of Health and Long Term Care has funded the development of the Prenatal Education Key Messages
- A clear understanding of who is encouraged to use the key messages, and how they can assist with the uptake into various practice settings
- The knowledge required to implement the use of the key messages into their own personal practice, as well as the resources to promote their use by their peers and colleagues as applicable

Presenter: Matthuschka Sheedy, Health Nexus Best Start Resource Centre, Toronto ON

P20 **Uninterrupted skin-to-skin focused caesarean sections - from birth to breast**

Gillian Ballantyne RN, BScN, PNC(C); Sue Hermann MN, RN, IBCLC, PNC(C); Carrie Winslade RN, BScN

Purpose: This innovative practice highlights the importance of incorporating skin-to-skin during the caesarean section process while simultaneously providing a better patient experience, improving outcomes for babies and facilitating an inter-professional approach.

Learning Objectives:

- Identifying the importance of maintaining sterile technique in the OR while enhancing the patient experience
- Discuss inter-professional collaboration
- Describe the benefits of skin-to-skin contact in relation to this procedure

Presenters: Gillian Ballantyne, Sue Hermann and Carrie Winslade, Sunnybrook Health Sciences Centre, Toronto ON

P21 **Supporting the role of nursing educators: A pilot project to integrate technology into hospital based competency assessment**

Leigh Andrews RN, MN, PNC(C); Beverly Waite RN, BScN; Yvonne Yu RNC-NIC, MScN; Leasa Knechtel RN, BScN, MN; Minoli Mendis BA

Purpose: An initiative was established to optimize use of the Learning Management System to mitigate issues experienced with managing nursing competencies and, to enhance the educational quality and consistency of competency assessments. A decentralized approach was taken to develop and coach our nursing leaders in education to achieve these goals.

Learning Objectives:

- Describe the decentralized model used to support nursing educators in the integration of technology into competency assessment
- Identify opportunities to adopt a decentralized model in their organization to manage nursing education competencies
- Identify an innovative way to enhance Advanced Practice Nurses and Educators' professional development and move their practice into a promising future

Presenter: Leigh Andrews, Sunnybrook Health Sciences Centre, Toronto ON

P22 **Intervention facilitating siblings' adaptation in a neonatal intensive care unit**

Phoukim Savanh RN, MSN (student); Marilyn Aita RN, PhD; Marjolaine Héon RN, PhD; Lyne Charbonneau RN, MSN

Purpose: The purpose is to present an intervention developed and implemented in a level III neonatal intensive care unit (NICU) to facilitate siblings' adaptation following the hospitalization of a premature newborn. The results and implications for practice will be presented.

Learning Objectives:

- Understand the impact of a premature birth on siblings
- Acquire knowledge about the importance of including siblings in neonatology considering a family centered care approach
- Promote best practices in nursing to support siblings and their families in the adaptation to the hospitalization of a premature newborn in a NICU

Presenter: Phoukim Savanh, Jewish General Hospital, Montreal QC

P23 **Bridging the gap: Towards an enhanced understanding of diastasis recutus abdominis**

Sinéad Dufour PT, PhD

Purpose: To review the clinically relevant components related to diastasis rectus abdominis and associated pelvic floor dysfunctions impacting perinatal populations.

Learning Objectives:

- To understand the current misconceptions related to DRA and the associated pitfalls in practice
- To learn how and why to assess for DRA
- To gain strategies related to prevention and restoration of DRA and associated pelvic floor dysfunctions

Presenter: Sinéad Dufour, Vanessa Ast Biller and Nikki Bergen, McMaster Hamilton ON

P24 **Nurturing Parenting, a two-generation, evidence-based program in low-income, high-risk families to enhance parent-child relationships and promote safe, healthy environment for early child development**

Muhammad Kashif Mughal MBBS, PhD; Karen Benzies PhD

Purpose: The purpose of the Nurturing Parenting program is to improve early childhood development by increasing parental knowledge and providing intensive support for families with intergenerational issues of poor parenting.

Learning Objectives:

- To identify (a) social risks for pregnant women and their families, and (b) how early intervention can mitigate that risk
- To discuss the objectives and curriculum of Nurturing Parenting
- To evaluate the effects of Nurturing Parenting on risk for child abuse and parenting skills

Presenter: Muhammad Kashif Mughal, University of Calgary, Calgary AB

P25 **Predictors of prenatal and postpartum psychological distress: A population based study in Manitoba**

Maureen Heaman RN, PhD; Dawn Kingston RN, PhD; Marni Brownell PhD; Michael Helewa MD, FRCSC; Shelley Derksen MSc; Kari-Lynne McGowan MSc

Purpose: The purpose of this poster is to present information on the prevalence and predictors of prenatal and postnatal psychological distress (anxiety and depression).

Learning Objectives:

- Describe the prevalence of prenatal and postnatal psychological distress using population-based administrative data
 - Identify predictors of both prenatal and postnatal psychological distress
- Promote screening for anxiety and depression in the preconception, prenatal and postpartum periods

Presenter: Maureen Heaman, University of Manitoba, Winnipeg MB

P26 **A social marketing initiative to increase awareness of the importance of prenatal care and where to access care among Winnipeg's inner-city women**

Maureen Heaman RN, PhD; Zorina Marzan Chang RN, MN; Lisa Merrill RN, MN; Lea Mutch RN, MN; Lynda Tjaden RN, MBA

Purpose: The purpose of this presentation is to describe the development, implementation and evaluation of a social marketing campaign to promote use of prenatal care among inner-city women in Winnipeg.

Learning Objectives:

- To describe key components of a social marketing campaign, "This Way to a Healthy Baby"
- To discuss evaluation results and factors affecting success of the campaign
- To demonstrate the role of nurses in leading intersectoral and interprofessional partnerships and influencing change in innovative ways

Presenters: Maureen Heaman, Zorina Marzan Chang and Lisa Merrill, University of Manitoba, Winnipeg MB



P27 *Developing interdisciplinary pathways for women with invasive placenta diagnoses*

Lindsay Pollard RN, BScN, MN, PNC; Susan Guest RN, BScN, MN, PNC, IBLBC; Nancy Watts RN, BScN, MN, PNC

Purpose: To provide information on an interdisciplinary process of providing care to a complex patient population showcasing the role of the clinical nurse specialist in complex planning.

Learning Objectives:

- Discuss the growing number of women and increasing challenges with invasive placenta diagnosis
- Describe the development of a care plan for women and their families with complex diagnosis to promote safety, preferences and expectations
- Discuss innovative technologies and resources used to promote evidence-based care

Presenter: Lindsay Pollard, Mt. Sinai, Toronto ON

P28 *How knowledgeable are couples in regards to changes in their sexuality in the perinatal period?*

Francine de Montigny inf., PhD; Pascale de Montigny MA; Emmanuelle Dennie-Filion BA

Purpose: Explore mothers and fathers' sexuality, sensuality and intimacy experience from pregnancy to the postpartum period, taking into account the influence of the breastfeeding context.

Learning Objectives:

- Provide better support for couples after the birth of a child by helping them to identify strategies to cope with the changes in their sexuality, sensuality and intimacy
- Share recommendations for family nursing practice for prenatal care
- Learn more about couples' challenges and coping strategies especially in the context of breastfeeding

Presenter: Francine de Montigny, Université du Québec en Outaouais, Gatineau QC

P29 *How does a previous experience of perinatal bereavement influence a woman's needs in a future pregnancy?*

Francine de Montigny inf., PhD; Emmanuelle Dennie-Filion BA; Chantal Verdon PhD

Purpose: Explore mother's needs in a pregnancy following perinatal bereavement.

Learning Objectives:

- Provide better individualized care for couples experiencing a pregnancy after perinatal bereavement
- Share recommendations for family nursing practice for setting up tools to support women during the prenatal period (e.g. support groups for couples experiencing a future pregnancy, online spaces to promote sharing and peer support)
- Learn more about couples' challenges and coping strategies in a pregnancy following perinatal bereavement

Presenter: Francine de Montigny, Université du Québec en Outaouais, Gatineau QC

P30 *Breastfeeding support for women with diabetes*

Jo Watson PhD, IBCLC, RN(EC); Michelle O'Connor MN, RN, PNC(C); Billarar Johnson MN, RN; Sue Hermann MN, IBCLC, RN

Purpose: To promote awareness and evidence-based strategies to health care staff in an effort to support breastfeeding for women with diabetes.

Learning Objectives:

- Understand the importance of Breastfeeding support in this unique population
- Describe the positive health outcomes for the mother with diabetes and her infant
- Implement evidence-based strategies to help mothers initiate and continue breastfeeding

Presenter: Michelle O'Connor, Sunnybrook Health Sciences Centre, Toronto ON

P31 *Video-feedback intervention to support the establishment of the mother-infant relationship in high-risk mothers*

Linda Bell PhD; Anne St-Pierre Pruneau BSc; Marie Lacombe PhD; Marjolaine Héon PhD; Sylvie Jetté PhD; Nancy Feeley PhD

Purpose: Understand the use of video-feedback intervention to promote the establishment of the mother-infant relationship.

Learning Objectives:

- Understand the use of video-feedback intervention
- Describe the use of an acceptability and feasibility project
- Estimate the effectiveness of the video-feedback intervention

Presenter: Linda Bell, Université de Sherbrooke, Sherbrooke QC

P32 *A Nurse Practitioner-led clinic supporting mothers with babies in the Neonatal Intensive Care Unit*

Donna Brown MN RN(EC); Jo Watson PhD RN(EC); Aimee Santoro MSc, RN (EC), PHCNP

Purpose: This poster describes an innovative Nurse Practitioner (NP) - led clinic in a tertiary obstetrical referral centre. This clinic was created to address the immediate postpartum and primary care needs of mothers whose babies are admitted to the Neonatal Intensive Care Unit (NICU). The model is collaborative, family - centred and provides timely and flexible access to care. In addition, it highlights the importance and possibilities of the NP role when working at full scope of practice.

Learning Objectives: After reviewing the poster, participants will be able to:

- Describe an innovative NP-led model of care supporting mothers with babies in the NICU
- Identify unique postpartum needs and concerns of mothers with babies in the NICU
- Identify and imagine the possibilities for NP-led clinics in an acute care setting and for the NP role when NPs are working at their full scope of practice

Presenter: Donna Brown, Sunnybrook Health Sciences Centre, Toronto ON



P33 **Introducing a quiet time intervention: Engaging patients and staff to assess barriers and benefits - results of pre-intervention phase**

Safina Adatia BAsC, MSc Candidate; Susan Law PhD; Jennifer Somera N, MSc(A); Marie-France Brizard N, MSc(A); Jeannie Haggerty PhD

Purpose: In this session we will present the results of the pre-intervention phase of the project. This phase of the study is designed to evaluate baseline measurements of noise, interruptions and patient experience prior to the introduction of a quiet time on a maternity ward. The goals of the pre-intervention phase are to collect baseline data on noise levels, number of interruptions and patient and staff experience, determine perceptions of the need for a quiet time amongst maternity unit staff and postpartum mothers and evaluate barriers and enablers to change.

Learning Objectives:

- Learn about quantitative approaches to measure noise levels and interruptions on a maternity ward
- Learn importance of participatory research approaches involving key stakeholders
- Develop understanding of barriers and facilitators to change on a maternity ward

Presenters: Safina Adatia and Jennifer Somera, McGill University, Montreal QC

P34 **Pre-implementation of a Quiet Time in a postpartum unit: Staff perspectives**

Jennifer Somera RN, MSc(A), IBCLC; Marie-France Brizard RN, MD.Go.

Purpose: To discuss the pre-implementation phase of Quiet Time in a postpartum unit by engaging the multidisciplinary team.

Learning Objectives:

- To discuss the process of engaging the multidisciplinary team in the Quiet Time quality initiative project
- To discuss what and how staff concerns were addressed before implementation of Quiet Time
- To discuss what and how the various departments' care services would be affected in the implementation of Quiet Time and how issues were avoided

Presenter: Jennifer Somera, St. Mary's Hospital Centre, Montreal QC

P35 **How Lean are you? Optimizing workflow processes in obstetrics through Lean management**

Irene Sarasua N, MSc(A), PNC(C), IBCLC; Emmanuela Deloge Tr., BSc; Kimani Daniel N, MSc(A), IBCLC, PNC(C)

Purpose: The purpose of this presentation is to familiarize participants with Lean management by illustrating the application of Lean principles to workflow optimization in a tertiary care obstetrical setting.

Learning Objectives:

- To understand the definition of Lean management
- To understand Lean principles that are applicable in the delivery of healthcare
- To develop and appreciation for the potential for workflow optimization in obstetrics through the application of Lean methodologies

Presenters: Irene Sarasua and Kimani Daniel, Jewish General Hospital, Montreal QC



Delivering streamlined perinatal care

Supporting healthy integration for your perinatal department

Used in the birth of more than 45 million babies, GE's Centricity™ Perinatal helps you deliver optimal care to every mother and baby for quality outcomes from L&D, through the NICU or Nursery. Our consolidated solution interfaces with major enterprise Hospital Information Systems (HIS) and leverages the latest technology to help simplify workflow in today's complex healthcare environment. It's designed so your practitioners can focus more on their patients, allowing you to focus on successful outcomes.

We invite you to stop by the GE Healthcare booth for a demonstration of our latest innovations or learn more at gehealthcare.com



©2015 General Electric Company - All rights reserved. Centricity, GE and GE Monogram are trademarks of General Electric Company. GE Healthcare, a division of General Electric Company. All other product names and logos are trademarks or registered trademarks of their respective companies. Centricity Perinatal does not replace clinical observation and evaluation of the patient at regular intervals, by a qualified care provider, who will make diagnoses and decide on treatments or interventions. Features of the Centricity Perinatal system are intended to support clinical decision making and should be used in combination with other clinical inputs, such as real time patient observation and information contained within other systems or recording tools. Not intended to be used as a primary monitoring device. JB274A8CA

2015 Exhibitors / Exposants 2015



www.surgimed.com

Kiosque/ Booth 15

Établie en 1997, Surgi-Pharm Avancé fournit une large gamme de produits à valeur ajoutée pour la santé des femmes et néonatale. Cette gamme inclut entre autres : des cathéters hystérosographiques, des ensembles de préleveur de sang fœtal, des lignes PICCs et des tubes à nutrition entérale. Surgi-Pharm Avancé est membre du Groupe de compagnies Surgmed qui incluent également les compagnies Imperial Surgical et Batrik Medical Manufacturing.

Established in 1997, Advanced Surgi-Pharm provides a wide range of value-added products for Women's and Neonatal Health that includes Hysterosonography Catheters, Fetal Blood Sampling Kits, PICC lines and Enteral Feeding Tubes. Advanced Surgi-Pharm is a member of the Surgmed Group of companies that includes Imperial Surgical and Batrik Medical Manufacturing.



Agence de la santé
publique du Canada

Public Health
Agency of Canada

www.phac-aspc.gc.ca

Kiosque/ Booth 7

L'Agence de la santé publique du Canada est chargée de promouvoir et de protéger la santé des Canadiens au moyen du leadership, de partenariats, de l'innovation et de la prise de mesures dans le domaine de la santé publique. Grâce à la recherche, à ses programmes et services, l'objectif de l'Agence consiste à améliorer la santé des Canadiens, réduire les disparités en matière de santé, en plus de renforcer sa capacité à offrir des services de santé publique et les soutenir.

The Public Health Agency of Canada is responsible for promoting and protecting the health of Canadians through leadership, partnership, innovation and action in public health. Through our research, programs and services, our goals are to bring about healthier Canadians, reduced health disparities, and a stronger capacity to deliver on and support public health activities.



www.amico.com

Kiosque/Booth 9

Amico Corporation, fondée en 1974 et les autres corporations au sein du groupe Amico, conçoivent, fabriquent et commercialisent une vaste gamme de produits pour pratiquement chaque département de l'établissement de soins de santé. Notre mission est de concevoir et livrer des produits à la fine pointe de la technologie qui facilitent le rôle du fournisseur de soins et lui permettent d'offrir les meilleurs résultats aux patients.

De nombreux produits sont fabriqués par le groupe d'entreprises Amico en commençant par descentrales d'air et d'aspiration médicale qui distribuent les gaz au patient via nos systèmes de distribution de gaz médicaux. Pour la chambre du patient, le groupe d'entreprises Amico fabrique des murs modulaires, des bras de service articulés, des lits et civières, du mobilier, des systèmes d'éclairage et des solutions de montage pour équipement.

Amico Corporation, founded in 1974, and the other corporations within the Amico Group, design, manufacture and market a broad range of products for virtually every department in the health care facility. Our mission is to design and deliver state-of-the-art products that facilitate the caregiver's role in providing the best outcomes for patients.

A very broad range of Products are manufactured by the Amico Group of Companies starting with Air & Vacuum Systems, which deliver gas through our Pipeline Products to the patient. In the Patient Room, the Amico Group of Companies manufacture the Headwall, Clinical products, the Bed, the Furniture, the Lights and the Equipment Mounting Products.



www.ibclc.qc.ca

Kiosque/ Booth 22

Notre mission: Faire connaître la profession d'IBCLC, consultante en lactation diplômée, tant auprès du public que nous desservons que du réseau de la santé dans lequel nous œuvrons.

Our mission: To promote the profession of IBCLC, International Board Certified Lactation Consultants, to the public that we serve as well as the in the health care system that we work in.



http://www.tegh.on.ca/bins/content_page.asp?cid=3-22-6657&lang=1

Kiosque/ Booth 23

La stratégie IAB pour l'Ontario, dirigée par l'Hôpital général de Toronto, en partenariat avec le Conseil de santé mère-enfant ainsi que le centre de ressources Meilleur départ, vise à promouvoir, protéger et soutenir l'adoption des meilleures pratiques cliniques en alimentation des nourrissons, comme décrit par l'Organisation mondiale de la santé. Elle offre aussi des outils, de la formation, des conseils ainsi que des ressources aux hôpitaux et aux services des soins communautaires de l'Ontario afin de les soutenir dans l'implantation des meilleures pratiques dans leur cheminement vers la certification en tant que centre IAB.

The BFI Strategy for Ontario, led by the Toronto East General Hospital in partnership with the Provincial Council for Maternal and Child Health and the Best Start Resources Centre, aims to promote, protect and support the adoption of clinical best practices in infant feeding as outlined by the World Health Organization, and provides hospitals and community health services in Ontario with the tools, training, guidance, and resources to help them implement best practices on their journey towards BFI designation.



www.bomimed.com

Kiosque/ Booth 5

BOMImed se consacre à la fabrication et à la distribution de produits d'assistance respiratoire, d'anesthésie, de soins intensifs et de protection thermique. Depuis 1985, nous nous sommes dévoués à trouver des solutions s'appuyant sur une expertise clinique de confiance. Nous nous sommes taillés une place en tant que chef de file dans le domaine de la santé grâce à notre dévouement, à nos constantes innovations, à notre intégrité et à notre service à la clientèle inégalé.

La solution pour des soins de qualité

BOMImed specializes in the manufacturing and distribution of airway management, anesthesia, critical care and warming therapy products. Since 1985 we have been dedicated to providing quality comprehensive solutions backed by trusted clinical expertise. Through our commitment to continued innovation, integrity and superior customer service we have firmly established ourselves as a leader in the health care industry.

Better Answers for Better Care



COMMANDITAIRE PLATINE / PLATINUM SPONSOR

www.draeger.com

Kiosque/ Booth 1-2

Dräger est une compagnie familiale d'envergure internationale et également à la pointe des technologies Médicales et de Sécurité. Nos produits sont avant tout pour protéger, assurer la sécurité et sauver des vies. Dräger, créée en 1889, a généré un chiffre d'affaires total de 2,370 millions d'Euros. Le groupe Dräger est actuellement présent dans plus de 190 pays dans le monde avec un effectif global de 12,500 employés.

Dräger is an international leader in the fields of medical and safety technology. Dräger Medical devices include Anesthesiology Workstations, Patient Monitoring, Intensive Care ventilators, Neonatal devices, and OR booms and lights. Our products protect, support and save lives. The Dräger Group, founded in 1889, is currently present in more than 190 countries and has approximately 12,500 employees worldwide.



careers.fraserhealth.ca

Kiosque/ Booth 13

Fraser Health est la région sanitaire la plus grande en Colombie-Britannique, représentant une population de 1,6 million d'habitants, comptant vingt municipalités. Fraser Health comprend 12 hôpitaux de soins actifs, un centre d'enseignement tertiaire et des services communautaires étendus de soins résidentiels, de soins à domicile, de soins de santé mentale et de santé publique, le tout faisant partie intégrante d'un continuum de soins homogène. Vous recherchez les défis; nous faisons nos preuves chaque jour. Ensemble, nous pouvons créer des milieux où il fait bon travailler.

Fraser Health is British Columbia's largest health authority, with a regional population of 1.6 million in 20 dynamic communities of Metro Vancouver and Fraser Valley. We oversee operations of 12 acute care hospitals, tertiary teaching hospitals and services in public health, home health, mental health and residential care facilities. Committed to the passionate pursuit of quality and safe health care, Fraser Health is an academic teaching organization that supports research, evaluation, and the use of evidence. In October 2013, Surrey Memorial Hospital opened the second largest Emergency Department in Canada along with a new Critical Care Tower in June 2014. Other expansion plans include the redevelopment of Chilliwack General Hospital and expansion of the Royal Columbian Hospital; these and other infrastructure projects underway provide unprecedented career opportunities, with current roles available in the areas of Perinatal, Neonatal, Pediatric, Pediatric ER and Women's Health.



www.gaumard.com

Kiosque/ Booth 6

Dans le cadre de son engagement global à l'éducation de la santé, Gaumard® fournit dans le monde entier des simulateurs innovants pour les soins d'urgence, les soins infirmiers, l'obstétrique et la gynécologie, ainsi que pour la chirurgie. En 2004, Gaumard a présenté le tout premier modèle de sa famille grandissante de simulateurs «Tetherless», qui en comprend maintenant trois (HAL®, NOELLE®, et Susie®), deux simulateurs en pédiatrie et deux simulateurs en néonatalogie. Tous les simulateurs sont contrôlés à partir d'une tablette PC sans fil.*

Gaumard® provides innovative simulators for emergency care, nursing, OB/GYN, and surgery worldwide as part of our global commitment to healthcare education. In 2004, Gaumard introduced the first of its growing family of "Tetherless" simulators, which now includes three (HAL®, NOELLE®, and Susie®), two Pediatrics, and two Newborn simulators. All are controlled from a wireless tablet PC.



COMMANDITAIRE ARGENT / SILVER SPONSOR

www.gehealthcare.com

Kiosque/ Booth 21

Centricity® Perinatal de GE permet aux cliniciens d'améliorer la sécurité des patients dans les départements Travail et accouchement, Mère-bébé et dans l'unité néonatale des soins intensifs. Grâce à une solution déployée à l'échelle régionale dans plusieurs établissements, nous vous permettons d'accroître le flux de travail et d'assurer que des soins judicieux et collaboratifs sont prodigués dans l'ensemble du continuum périnatal.

Nos solutions évolutives vous permettent de commencer avec un système de base et de passer plus tard, à mesure que vos besoins changeront, à une fonctionnalité avancée. Centricity® Perinatal offre une grande variété d'options d'interface ADT entrante, laboratoire et HL7 sortante. Vous pourrez ainsi augmenter la portée et la valeur de l'interopérabilité de votre système d'information d'hôpital actuel.

La suite de solutions éprouvées et perfectionnées Centricity® de GE Santé couvre tout le spectre des soins, des cabinets privés aux grands et complexes réseaux intégrés de prestation de soins, en passant par les centres médicaux universitaires. Notre vision, intitulée « healthymagination », invite le reste du monde à nous rejoindre dans notre effort pour mettre continuellement au point des innovations axées sur la réduction des coûts, l'augmentation de l'accès et l'amélioration de la qualité et de l'efficacité.

Veillez nous visiter au kiosque 21 à la Conférence de CAPWHN à Québec.

GE Centricity® Perinatal helps clinicians improve patient safety in Labor & Delivery, Mother-Baby, and the NICU. With a regionally deployed solution across multiple institutions, we enhance workflow and help to drive informed, collaborative care across the perinatal continuum.

Scalable solutions allow you to start with a basic system, and move on to advanced functionality later as your needs change. Centricity® Perinatal provides a wide variety of inbound/ADT, lab, and outbound HL7 interfacing options to further increase the reach and value of interoperability with your existing hospital information system.

The GE Healthcare Centricity® suite of proven, advanced solutions spans the entire care spectrum – from independent physician practices, to academic medical centers, to large and complex integrated delivery networks. Our «healthymagination» vision invites the world to join us on our journey as we continuously develop innovations, which focus on reducing costs, increasing access and improving quality and efficiency.

Healthcare IT Re-imagined. Please visit GE Healthcare at booth 21 at the CAPWHN Conference in Quebec City.



Hill-Rom

www.hill-rom.com/canada

Kiosque/ Booth 16-17

Hill-Rom offre des produits et services complets pour les centres hospitaliers, les établissements de soins de longue durée et les soins à domicile qui améliore la sécurité des patients et la qualité des soins. Chef de file pour les lits d'hôpitaux et surfaces thérapeutiques, Hill-Rom offre aussi des civières, des murs modulaires et des solutions technologiques pour améliorer la continuité du travail.

Hill-Rom's comprehensive product and service offerings are used in hospitals, extended care facilities and home care settings to enhance patient safety and the quality of patient care. A leading provider of hospital beds and therapeutic surfaces, Hill-Rom's offering also includes stretchers, headwalls and workflow information technology solutions.

MAQUET-DYNAMED

COMMANDITAIRE BRONZE / BRONZE SPONSOR

www.maquet-dynamed.com

Kiosque/ Booth 19-20

MAQUET-DYNAMED représente la division de soins aux nourrissons et aux mères de GE et proposera toute la gamme de produits pour les unités d'accouchement et de soins néonataux intensifs, dont les appareils de surveillance de la mère et du fœtus Corometrics, les appareils de réanimation néonatale Panda iRes, le Shuttle Giraffe pour le transport intrahospitalier, des incubateurs et une combinaison d'appareils OmniBed conçus pour l'unité de soins néonataux intensifs et la photothérapie.

MAQUET-DYNAMED represents the Maternal Infant Care division for GE and will be presenting the entire product spectrum for L&D and NICU including Corometrics: Maternal and Fetal Monitoring, Panda iRes neonatal Resuscitation warmer, Giraffe Shuttle transportation device, Standalone resuscitation unit (StAR), a hand held ultra sound (dual vision V-Scan), Giraffe incubators and combination OmniBed for NICU and new Phototherapy treatment devices as well as, specialty preemie products such as diapers, soothers and phototherapy eye-covers..



COMMANDITAIRE PLATINE / PLATINUM SPONSOR

www.johnsonsbaby.ca

Kiosque/ Booth 10-11

Prendre soin de l'humanité... une personne à la fois, tel est le principe qui anime et unit le personnel de Johnson & Johnson. Nous nous inspirons de la recherche et de la science pour proposer des idées, des produits et des services innovants qui permettront d'améliorer la santé et le bien-être de la population. Les employés de Johnson & Johnson Family of Companies collaborent avec des partenaires du secteur des soins de santé afin de toucher, au quotidien, la vie de plus d'un milliard de personnes partout dans le monde..

Caring for the world, one person at a time... inspires and unites the people of Johnson & Johnson. We embrace research and science — bringing innovative ideas, products and services to advance the health and well-being of people. Employees of the Johnson & Johnson Family of Companies work with partners in health care to touch the lives of over a billion people every day, throughout the world.



northern health
the northern way of caring

www.careers.northernhealth.ca

Kiosque/ Booth 3

Chez Northern Health, nous construisons pour l'avenir. Afin d'assurer le succès de notre organisation, une de nos priorités est d'embaucher et de retenir des employés hautement qualifiés. Notre vision de bâtir un système de soins de santé primaires robuste permettra de créer un environnement de travail dynamique qui mettra toutes vos compétences au défi. Des carrières intéressantes et enrichissantes, et une qualité de vie exceptionnelle vous attendent!

At Northern Health, we build for the future. Acquiring and retaining high-quality talent is a high priority for our organizations success. Our vision of building a strong primary health care system will create a dynamic work environment that challenges all of your skills. Meaningful and rewarding careers, and an outstanding quality of life await!



www.novabiomedical.com

Kiosque/ Booth 24

Nova Biomedical, le leader de la technologie des biocapteurs Nova Biomedical est le leader mondial de technologie innovante en matière de développement d'analyseurs de sang total à base de biocapteurs pour effectuer des tests d'urgence. Au cours des 30 dernières années, Nova a mis sur le marché plus de 20 biocapteurs de sang total, dont les premiers biocapteurs de l'industrie permettant de mesurer directement le glucose, le lactate, l'hématocrite, le calcium, le chlore, la créatinine, l'urée, le lithium et le magnésium sur de sang total. Les analyseurs de sang total Nova sont réputés pour leur qualité avec plus de 40000 analyseurs vendus dans le monde entier.

Nova Biomedical, Technology Leader in Whole Blood Testing Nova Biomedical is a world technology leader in the development of advanced technology, biosensor-based whole blood analyzers and Point of Care Devices for stat and critical care testing. Over the past 30 years, Nova has introduced more than 20 whole blood biosensors, including the industry's first biosensors to directly measure glucose, lactate, hematocrit, calcium, chloride, creatinine, urea, lithium and magnesium in whole blood. Nova whole blood analyzers have earned a reputation for quality and value with over 40,000 analyzers sold worldwide.



www.obix.com

Kiosque/ Booth 8

Le Système de Données Périnatal[®] OBIX est un système informatisé complet pour la surveillance central, au chevet du lit du patient, et pour le monitoring foetal électronique à distance. Le système comprend l'archivage, la capacité de documenté au point-de-service, rapports d'administration qui sont facile d'accéder, et la facilite pour le medecin d'accéder le système par l'internet. Le système OBIX offre un accès de données périnatal échelle de l'entreprise par interfacant avec d'autres systèmes hospitaliers, des solutions pour la documentation échelle de l'entreprise, et les référentiels de documents.

The OBIX[®] Perinatal Data System is a comprehensive, computerized system for central, bedside, and remote electronic fetal monitoring. It includes archiving, point-of-care charting, single-click management reports, and Internet-based physician access. The OBIX system offers enterprise-wide perinatal data access by interfacing with other hospital systems, enterprise-wide charting solutions, and document repositories.



COMMANDITAIRE BRONZE / BRONZE SPONSOR

www.philips.com/healthcare

Kiosque/ Booth 12

Chez Philips, nous nous efforçons de rendre le monde plus sain et plus durable grâce à l'innovation. Notre objectif est d'améliorer la vie de 3 milliards de personnes par an d'ici 2025. Philips est dédié à la création de l'avenir des soins de santé et sauver des vies. Nous développons des solutions innovantes à travers le continuum de soins en partenariat avec des cliniciens et de nos clients pour améliorer les résultats des patients, fournir une meilleure valeur, et élargir l'accès aux soins.

At Philips, we strive to make the world healthier and more sustainable through innovation. Our goal is to improve the lives of 3 billion people a year by 2025. Philips is dedicated to creating the future of healthcare and saving lives. We develop innovative solutions across the continuum of care in partnership with clinicians and our customers to improve patient outcomes, provide better value, and expand access to care.



www.careers.phsa.ca

Kiosque/ Booth 18

La Régie provinciale de la santé (PHSA) planifie, gère et évalue des services sélectionnés de santé spécialisés et des services généraux dirigés à l'ensemble de la Colombie-Britannique. Ceci est réalisé en collaboration avec les cinq autorités sanitaires géographiques afin d'offrir des solutions à l'échelle de la province pour améliorer la santé des citoyens de la Colombie-Britannique. BC Women's Hospital (BCW) est une agence qui relève de la Régie provinciale de la santé (PHSA) et est le seul établissement en Colombie-Britannique principalement consacré à la santé des femmes, des nouveau-nés et des familles. BCW offre une vaste gamme de services de santé spécialisés qui répondent aux besoins de santé spécifiques aux femmes de tout âge et de toute origine. BCW est une des plus grandes cliniques de maternité au Canada, avec plus de 7,000 naissances par année. Comme un centre de santé universitaire, notre mandat consiste à fournir une direction forte dans la recherche, la formation et le perfectionnement des professionnels des soins de santé dans les domaines liés à la santé des populations que nous servons. Découvrez une carrière en soins infirmiers avec une organisation qui touche tous les aspects des soins de santé spécialisés à travers la province. Postuler en ligne à www.phsa.ca/careers. Pour plus d'informations contactez Kuldish Chatha, Conseillère en Recrutement, au 604-875-7291, ou e-mail Kuldish.chatha@phsa.ca

The Provincial Health Services Authority (PHSA) plans, manages and evaluates selected specialty and province-wide health care services across BC, working with the five geographic health authorities to deliver province-wide solutions improving the health of British Columbians. BC Women's Hospital (BCW) is an agency of the PHSA. BCW is the only facility in British Columbia devoted primarily to the health of women, newborns and families. It provides a broad range of specialized women's health services that address the health needs of women of all ages and backgrounds. BC Women's is one of the largest maternity facilities in Canada, with over 7,000 births a year! As an academic health centre BCW's mandate includes providing strong leadership in research and the education and professional development of health care professionals in areas related to the health of the populations we serve. Discover a Nursing career with an organization that touches every facet of specialty health care across the province! Apply online at <http://careers.phsa.ca>. For more information contact Kuldish Chatha, Recruitment Advisor at 604-875-7291 or email Kuldish.chatha@phsa.ca

www.sc-hc.gc.ca

Kiosque/ Booth 4

Visitez-nous pour en apprendre plus sur la Cote air santé (CAS), un instrument d'information publique qui aide les Canadiens à se protéger des effets négatifs de la pollution de l'air. Cette index est particulièrement utile pour les personnes sensibles à la pollution de l'air, qui reçoivent des conseils sur les moyens à prendre pour protéger leur santé pendant les épisodes de pollution présentant des risques faibles, modérés, élevés ou très élevés pour la santé. Renseignez-vous aussi sur les risques pour la santé les plus courants liés à la qualité de l'air qui peuvent se trouver dans une maison et sur les mesures simples qui peuvent être prises pour se protéger.

Stop by to learn about the Air Quality Health Index (AQHI), a public information tool that helps Canadians protect their health on a daily basis from the negative effects of air pollution. This index is especially useful for people who are sensitive to air pollution and provides them with advice on how to protect their health during air quality levels associated with low, moderate, high and very high health risks. You will also learn about the more common health risks linked to air quality that may be present in a home, and the simple steps that can be taken to protect health.



www.stryker.com

Kiosque/ Booth 14

Stryker Médical est une compagnie manufacturière de produits médicaux et chirurgicaux spécialisés servant entre autre en salle d'opération, pour le transport des patients dans les réseaux de santé hospitalier et en soins paramédicaux. Nous sommes dédiés aux soins aux patients afin d'assurer une sécurité supérieure aux intervenants impliqués à les prodiguer. Stryker Médical propose une large gamme de lits d'hôpital, de surfaces d'appui, de civières et de meubles de chambre d'hôpital qui intègrent la technologie « BackSmart » - basée sur une conception ergonomique qui aide à réduire le risque de blessure des intervenants tout en aidant à améliorer la santé des patients. Les solutions de mobilité, les surfaces thérapeutiques, la technologie de détection de sortie du lit et les technologies « Connected Hospital » établissent de nouvelles normes en matière de soins aux patients avec succès.

Stryker Medical is an industry leading manufacturer of medical patient handling equipment for hospitals and emergency and rescue operations. We are dedicated to superior patient care and caregiver safety. Stryker Medical offers a broad portfolio of hospital beds, support surfaces, stretchers and hospital room furniture that feature BackSmart technology — ergonomic-based design that helps to reduce the risk of caregiver injury and improve patient outcomes. Stryker's mobility solutions, support surface therapies, bed monitoring and Connected Hospital technologies set new standards for successful patient care.



there's
so much more™



to love about
bath time

à
l'heure du bain



il y a
tellement plus^{MC}
à aimer

Everyday rituals, such as bath time, are ideal opportunities for stimulating what a baby feels, smells, hears and sees.

This multisensorial stimulation can promote a baby's social, emotional, cognitive, and physical development.

JOHNSON'S® brand has been committed to advancing clinical research and scientific understanding of baby skin for 120 years.

Les rituels quotidiens, tels que l'heure du bain, sont des occasions idéales pour stimuler le toucher, l'odorat, l'ouïe et la vue de bébé.

Cette stimulation multisensorielle peut favoriser le développement social, émotionnel, cognitif et physique de bébé.

Depuis 120 ans, la marque JOHNSON'S® poursuit son engagement envers l'avancement de la recherche clinique et les connaissances scientifiques sur la peau des bébés.

Visit us at booth #10 to learn more about the **Science of the Senses™**

Visitez-nous à kiosque n° 10 pour en savoir plus sur **la science des sens^{MC}**

Brought to you by
Présenté par **Johnson's®**

© Johnson & Johnson Inc. 2015



www.babyfirst.com

A neonatal community for
clinicians & parents of premature babies.

Comprehensive neonatal education for clinicians along
with support and education for parents.